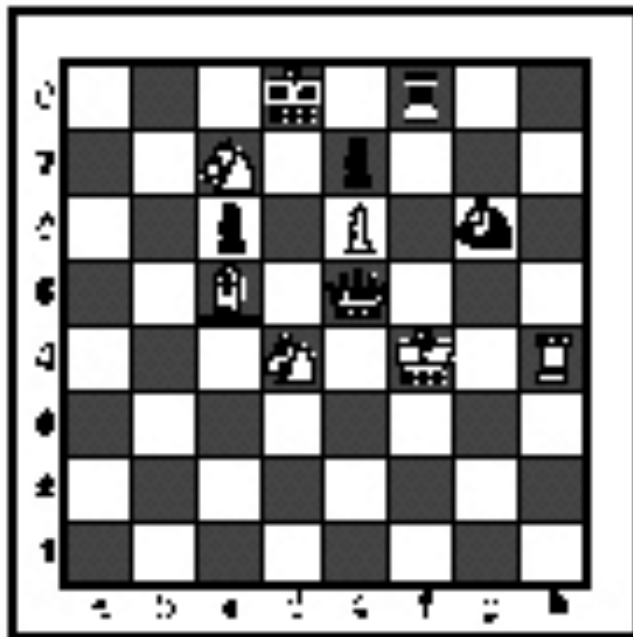


SPRING DISTRICT 2023-2024

A+ ACADEMICS



University Interscholastic League



Chess Puzzle Solving

grades 4 & 5

**DO NOT OPEN TEST
UNTIL TOLD TO DO SO**

IMPORTANT INSTRUCTIONS:

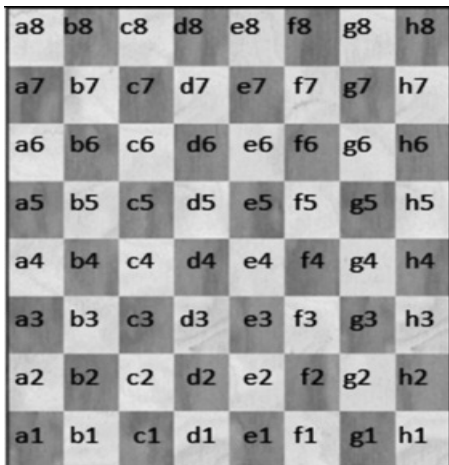
[Test-administrators, please read text in this box aloud.]

This is the UIL Chess Puzzle Solving Invitational Test for grades four through five. There are 20 questions on this test. You have 30 minutes to complete it. All questions are multiple choice. Use the answer sheet to mark your answers. Multiple choice answers purposely do not indicate check, checkmate, or e.p. symbols. You will be awarded one point for each correct answer. No deductions will be made for incorrect answers on this test. Finishing early is not rewarded, even to break ties. So use all of your time. Some of the questions may be hard, but all of the puzzles are interesting! Good luck and have fun!

If you don't already know chess notation, reading and referring to the section below on this page will help you.

How to read and answer questions on this test

- To answer the questions on this test, you'll need to know how to read chess moves. It's simple to do.
- Every square on the board has an "address" made up of a letter and a number.

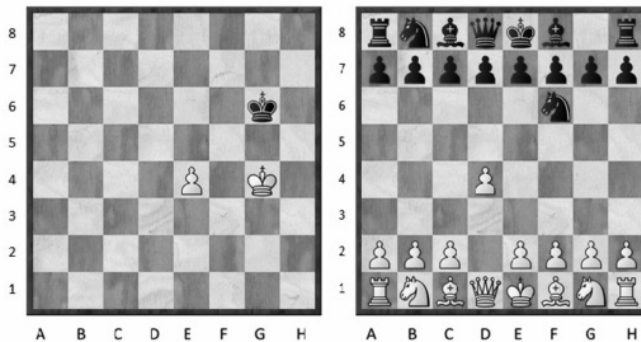


Piece Names	Each chessman can also be represented by a symbol, except for the pawn. (Figurine Notation)
King	♔
Queen	♚
Rook	♖
Bishop	♗
Knight	♘
Pawn	a-h (We write the file it's on.)

- To make them easy to read, the questions on this test use the figurine piece symbols on the right, above.
- When answering the puzzle questions, remember that white pawns move "up" the diagrams. Black pawns move "down" the diagrams.

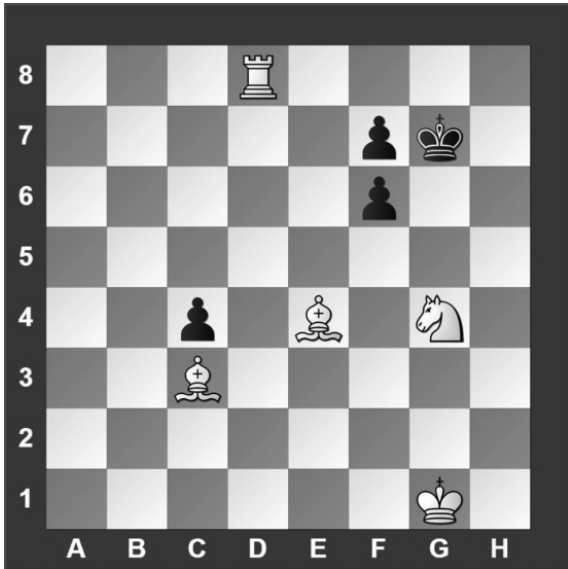
At right are two sample moves.

If you look closely at the diagrams in the questions below, you'll see that the frame around the diagram labels the ranks (1-8) and files (a-h) to help you.



White has just played **e4**. Black has just played ... **Nf6**.

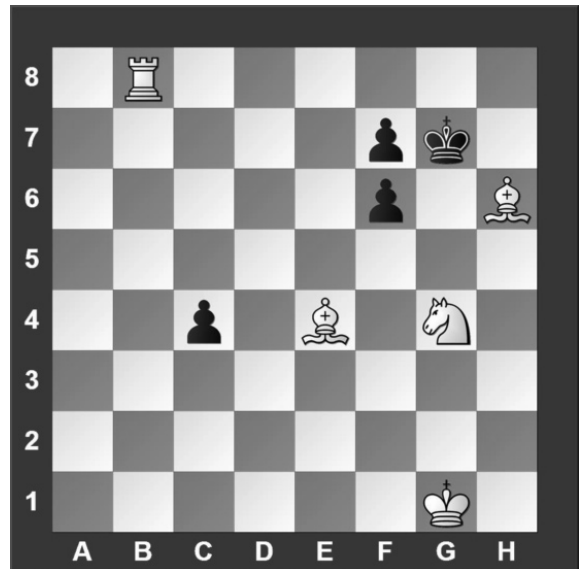
#1. Black to move



What term best describes this situation?

- a) Black is in checkmate
- b) Black is in stalemate
- c) Black is in check
- d) None of the above

#2. Black to move



What term best describes this situation?

- a) Black is in checkmate
- b) Black is in stalemate
- c) Black is in check
- d) None of the above

#3 Black to move.



What term best describes this situation?

- a) Black is in checkmate
- b) Black is in stalemate
- c) Black is in check
- d) None of the above

#4.



Which side has material advantage?

- a) White
- b) Black
- c) It's even
- d) It's not possible to tell

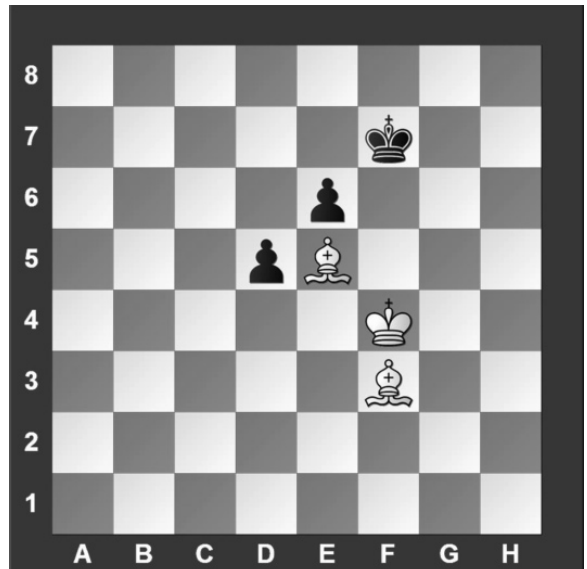
#5. White to move



Which move below is possible for White?

- a) Short Castle
- b) Long Castle
- c) Take Black's Knight
- d) Take Black's Queen

#6. White to move



With the best moves, what is the outcome of the game?

- a) Black wins.
- b) White wins.
- c) Draw.
- d) It is impossible to tell.

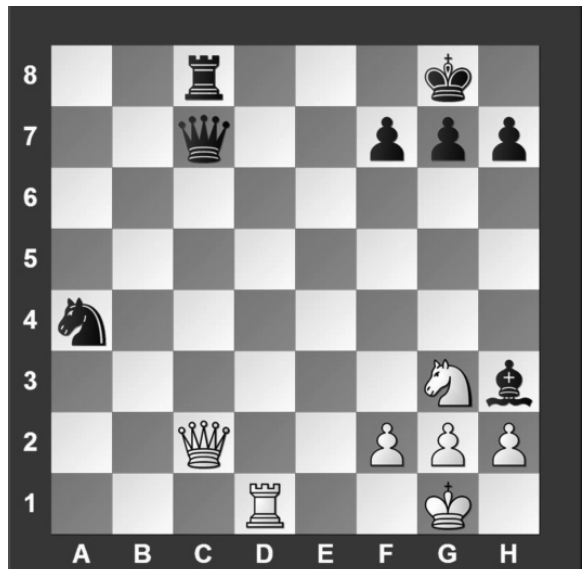
#7. White to move



Black just played c7 to c5. Which pawn can be captured?

- a) Black's e-pawn
- b) Black's f-pawn
- c) Black's c-pawn
- d) White can't capture a pawn

#8. White to move



What piece should White capture?

- a) Queen
- b) Knight
- c) Bishop
- d) Pawn

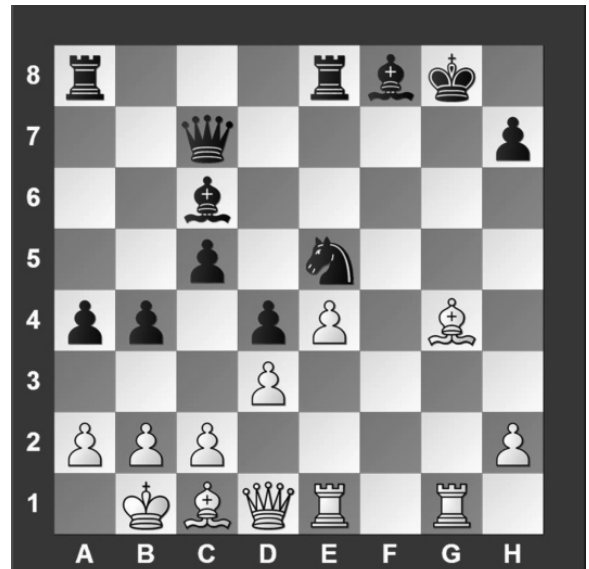
#9. White to move



What is White's best move?

- a) ♔f6
- b) ♖g7
- c) ♗×d5
- d) ♘×f4

#10. White to move



What is White's best move?

- a) ♔h5
- b) ♔d7
- c) ♔e6
- d) ♖f3

#11. White to move



What is White's best move?

- a) ♘c6
- b) ♔×a6
- c) ♔g5
- d) ♖d1

#12. White to move



What is White's best move?

- a) ♗×h6
- b) ♖×h6
- c) g×f5
- d) ♖a6

#13. White to move



What is White's best move?

- a) ♖×a8
- b) ♖×h6
- c) ♖×d7
- d) ♕g4

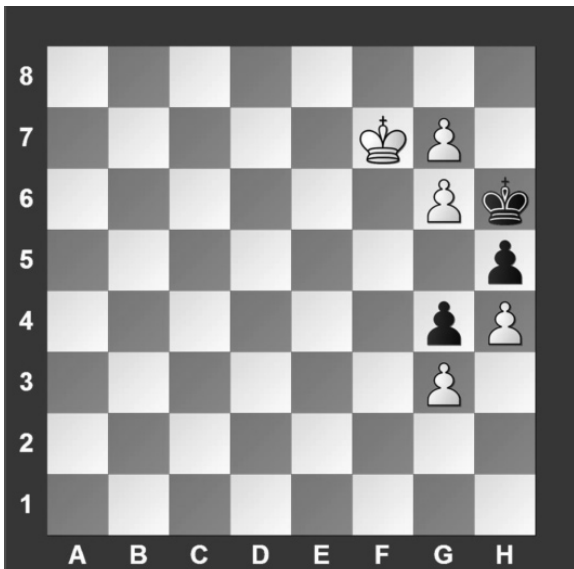
#14. White to move



What is White's best move?

- a) ♖×d8
- b) ♕×h7
- c) ♖g5
- d) ♖c2

#15. White to move



What piece should White promote to?

- a) Queen
- b) Rook
- c) Bishop
- d) Knight

#16. White to move



What is White's best move?

- a) ♖×e8
- b) ♕d4
- c) ♖e1
- d) f4

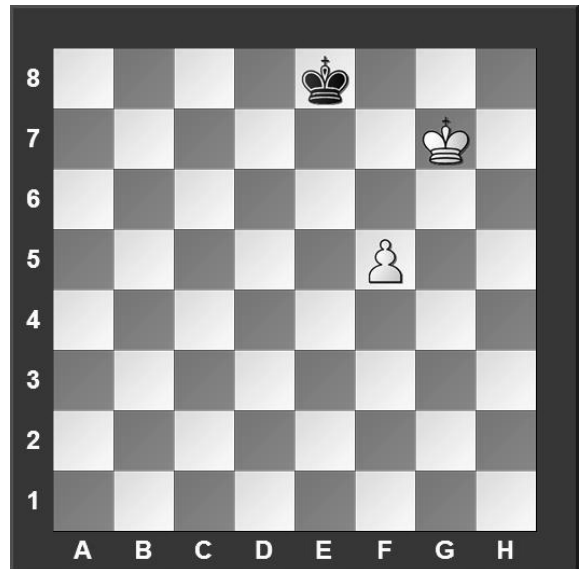
#17. White to move



What is White's best move?

- a) $\text{N} \times \text{b}4$
- b) $\text{N} \times \text{f}6$
- c) $\text{N} \times \text{e}7$
- d) $\text{N} \text{c}7$

#18. White to move



With the best moves, what is the outcome of the game?

- a) White wins.
- b) Black wins.
- c) It is a draw.
- d) It is not possible to tell.

#19. White to move



What is White's best move?

- a) $\text{K} \times \text{b}7$
- b) $\text{K} \times \text{f}5$
- c) $\text{d}5$
- d) $\text{g}4$

#20. White to move



What is White's best move?

- a) $\text{R} \text{a}2$
- b) $\text{R} \text{b}1$
- c) $\text{N} \text{b}5$
- d) $\text{N} \text{a}4$



**University Interscholastic League
A+ Chess Puzzle Contest
2023-2024 Spring — Grades 4 & 5**

ANSWER KEY

Test

- | | | | |
|-----|---|-----|---|
| 1. | B | 11. | C |
| 2. | A | 12. | A |
| 3. | C | 13. | C |
| 4. | B | 14. | B |
| 5. | C | 15. | D |
| 6. | B | 16. | B |
| 7. | C | 17. | D |
| 8. | A | 18. | A |
| 9. | A | 19. | B |
| 10. | C | 20. | D |

Tiebreaker

- | | | | |
|----|---|----|---|
| 1. | B | 5. | B |
| 2. | A | 6. | C |
| 3. | C | 7. | A |
| 4. | D | 8. | C |