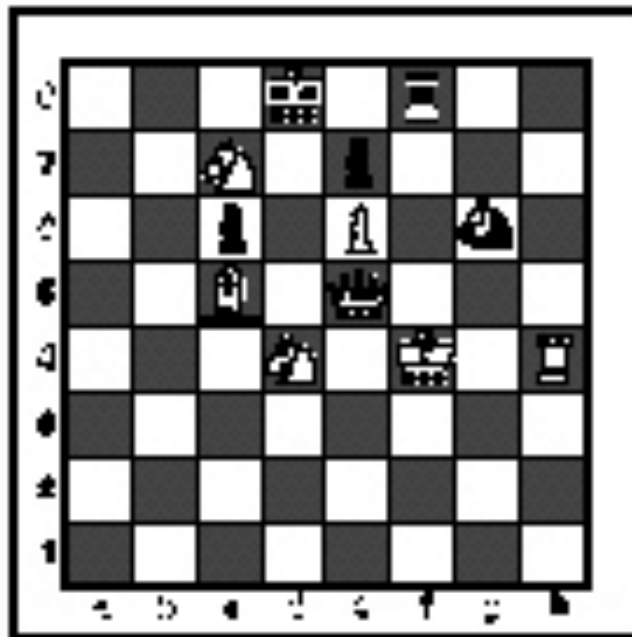


INVITATIONAL 2023-2024

A+ ACADEMICS



University Interscholastic League



Chess Puzzle Solving


grades 4 & 5

**DO NOT OPEN TEST
UNTIL TOLD TO DO SO**

How to read and answer questions on this test

- To answer the questions on this test, you'll need to know how to read chess moves. It's simple to do.
- Every square on the board has an "address" made up of a letter and a number.

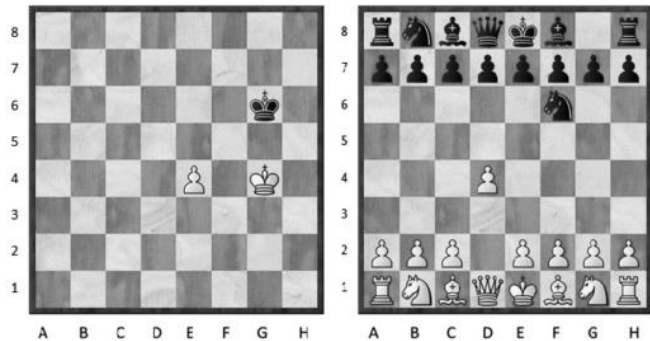


Piece Names	Each chessman can also be represented by a symbol, except for the pawn. (Figurine Notation)
King	
Queen	
Rook	
Bishop	
Knight	
Pawn	a-h (We write the file it's on.)

- To make them easy to read, the questions on this test use the figurine piece symbols on the right, above.
- When answering the puzzle questions, remember that white pawns move "up" the diagrams. Black pawns move "down" the diagrams.

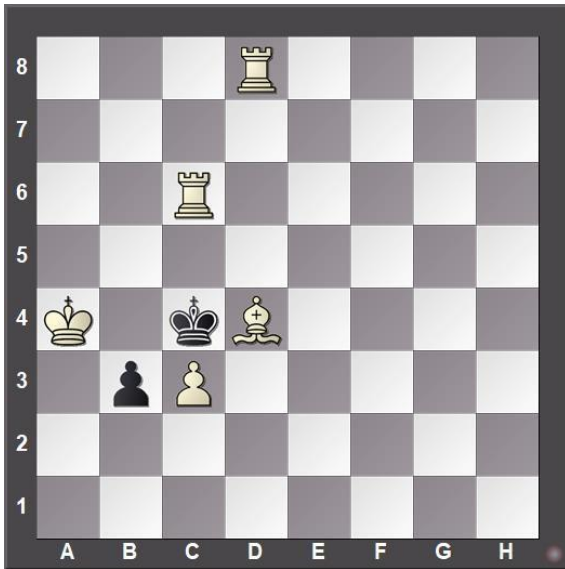
At right are two sample moves.

If you look closely at the diagrams in the questions below, you'll see that the frame around the diagram labels the ranks (1-8) and files (a-h) to help you.



White has just played **e4**. Black has just played ...  **f6**

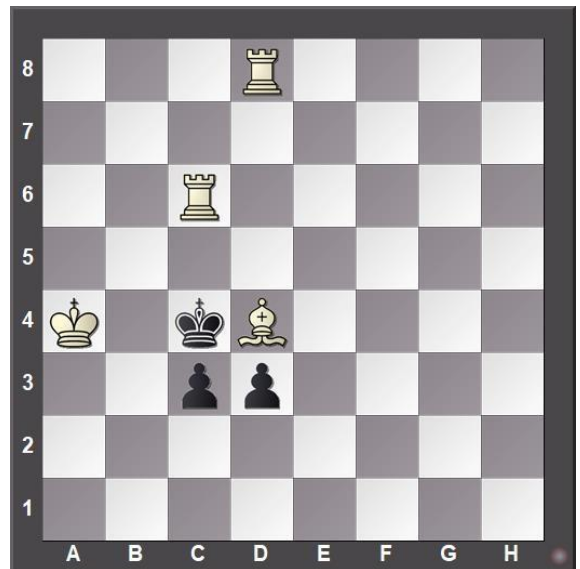
#1. Black to move



What term best describes this situation?

- a) Black is in checkmate.
- b) Black is in stalemate.
- c) Black is in check.
- d) None of the above.

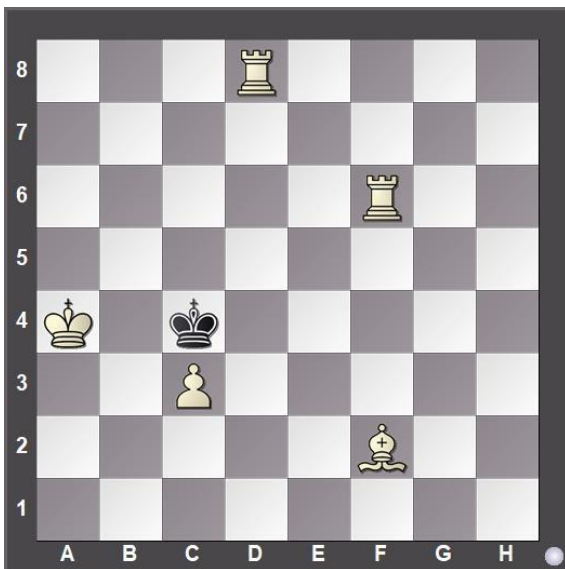
#2. Black to move



What term best describes this situation?

- a) Black is in checkmate.
- b) Black is in stalemate.
- c) Black is in check.
- d) None of the above.

#3. Black to move



What term best describes this situation?

- a) Black is in checkmate.
- b) Black is in stalemate.
- c) Black is in check.
- d) None of the above.

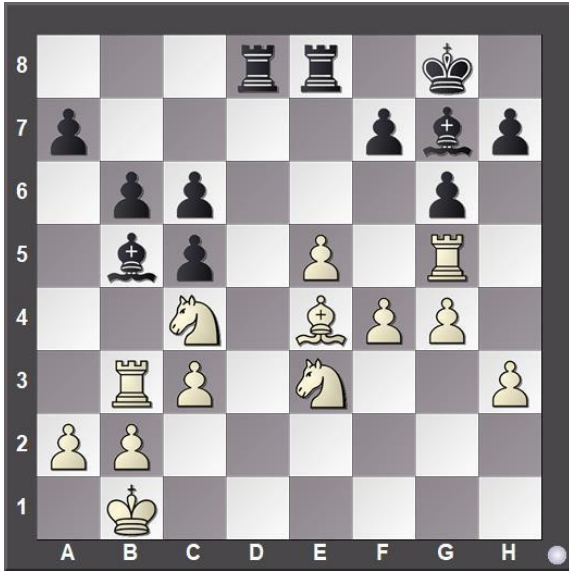
#4. Black to move



White just played d2 to d4. Which pawn can be captured?

- a) Black's b-pawn
- b) Black's d-pawn
- c) Black's g-pawn
- d) None of the above

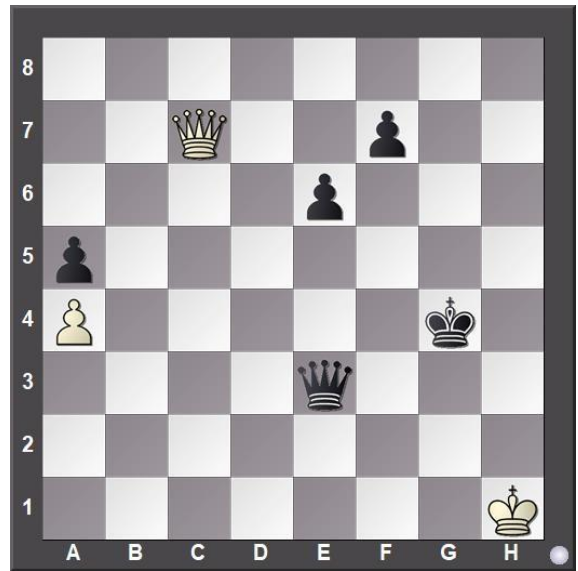
#5.



Which side has a material advantage?

- a) White
- b) It is even.
- c) Black
- d) It is not possible to tell.

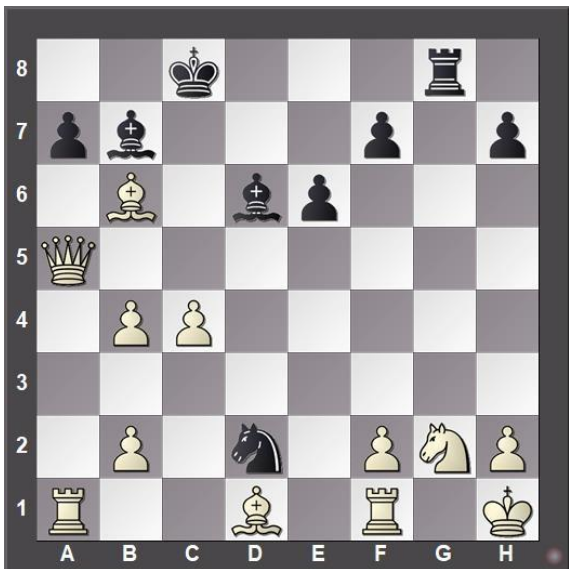
#6. White to move



What is White's best move?

- a) ♔xf7
- b) ♔c4
- c) ♔g3
- d) ♔g2

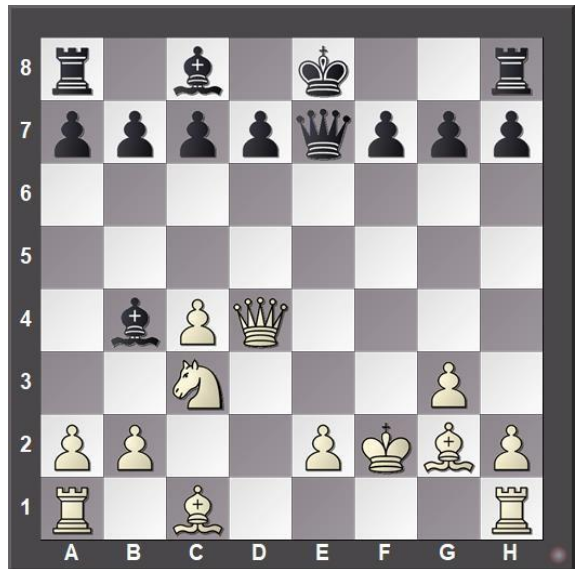
#7. Black to move



If Black can checkmate White, how many moves does Black need?

- a) 1 move
- b) 2 moves
- c) 3 moves
- d) 4 moves

#8. Black to move



What is Black's best move?

- a) ♜xc3
- b) d5
- c) ♔f6
- d) ♜c5

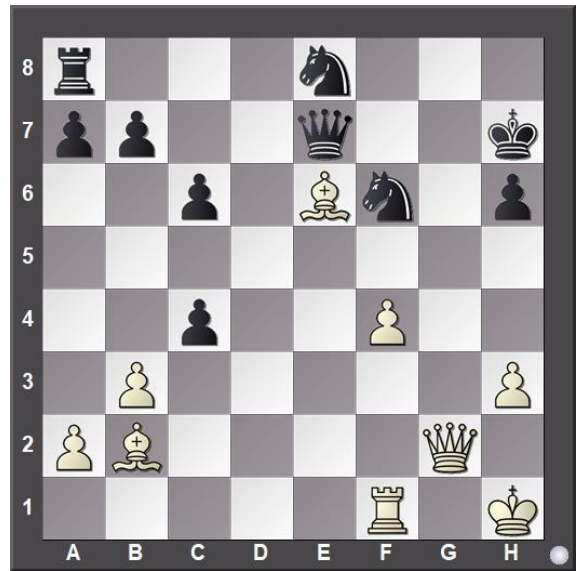
#9. Black to move



What is Black's best move?

- a) ♔×d3
- b) ♖ad8
- c) ♜e1
- d) ♘×d3

#10. White to move



If White can checkmate Black in two moves, what is the *second* move?

- a) ♔g8
- b) ♔g7
- c) ♘g7
- d) ♘f5

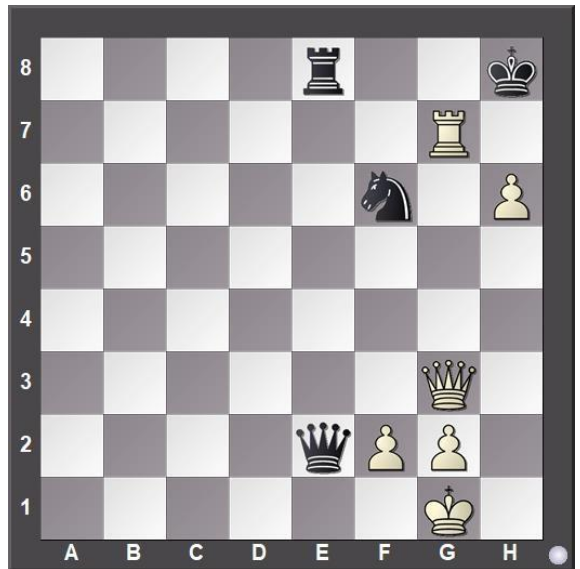
#11. White to move



What is White's best move?

- a) ♘ge4
- b) ♘ce4
- c) ♖xf5
- d) ♔h5

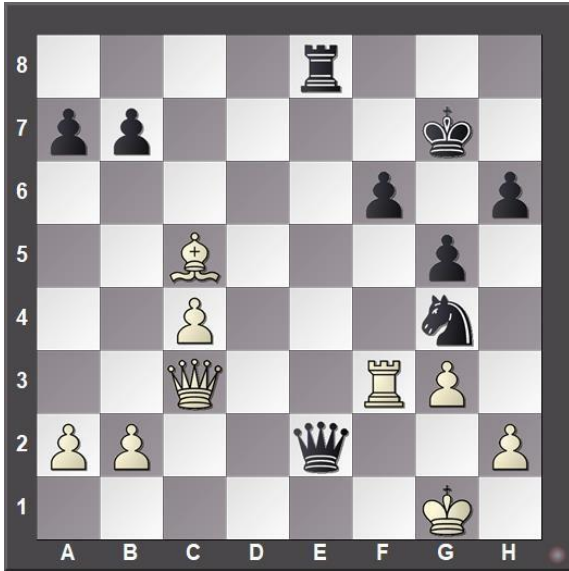
#12. White to move



What is White's best move?

- a) ♖g8
- b) ♖h7
- c) ♖f7
- d) h7

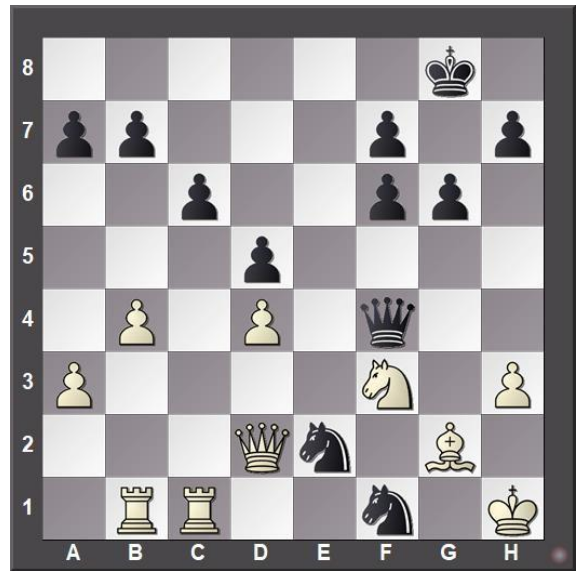
#13. Black to move



If Black can checkmate White in three moves, what is the *third* move?

- a) ♔×f3
- b) ♖×h2
- c) ♖e1
- d) ♔h3

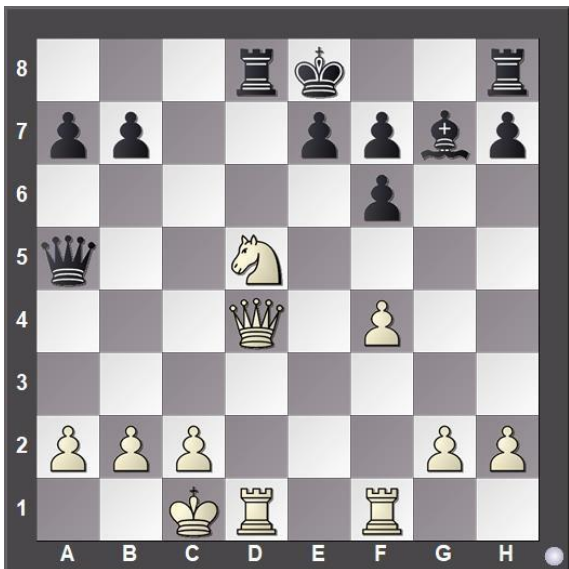
#14. Black to move



What is Black's best move?

- a) ♖eg3
- b) ♖fg3
- c) ♔×f3
- d) ♔h2

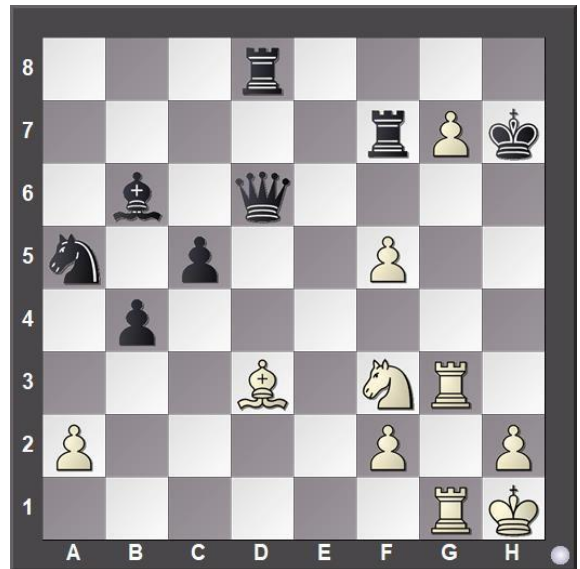
#15. White to move



What is White's best move?

- a) ♖c7
- b) ♖×f6
- c) ♔a4
- d) ♔×f6

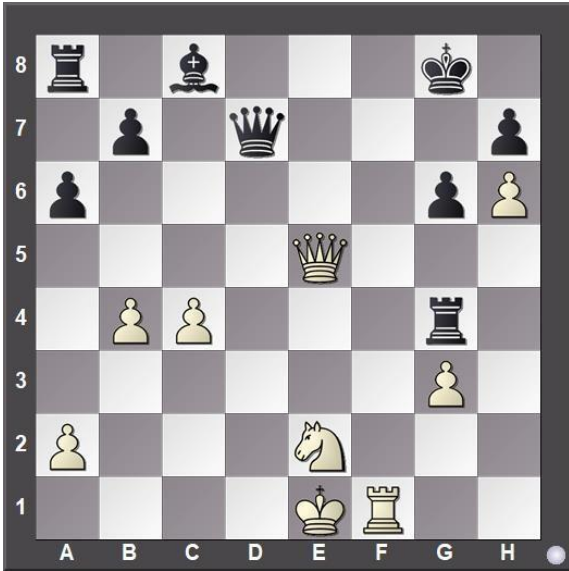
#16. White to move



If White can checkmate Black, how many moves does White need, with the best play?

- a) 1 move
- b) 2 moves
- c) 3 moves
- d) 4 moves

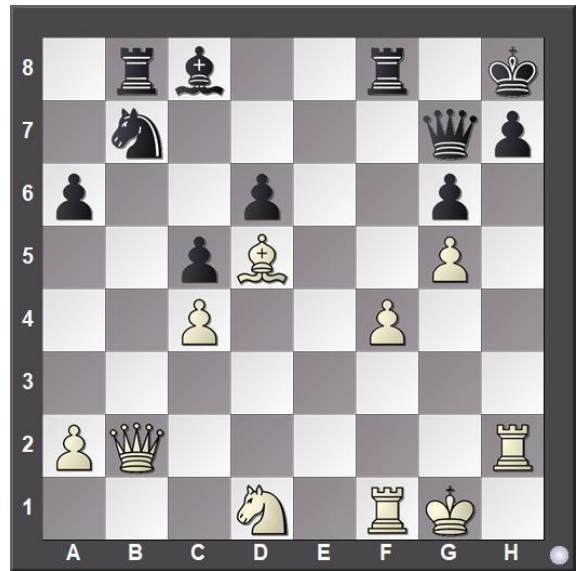
#17. White to move



What is White's best move?

- a) ♖f8
- b) ♖f7
- c) ♗g7
- d) ♗h8

#18. White to move



If White can checkmate Black in four moves, what is the *second* move?

- a) ♗h2
- b) ♖xh7
- c) ♗xg7
- d) ♖h6

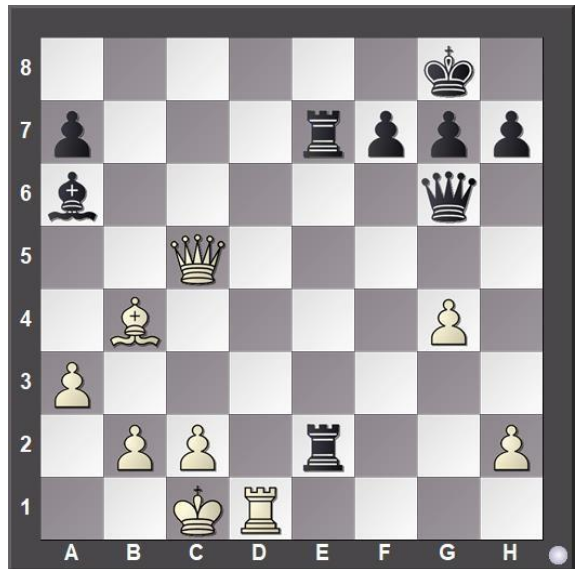
#19. White to move



What is White's best move?

- a) d5
- b) ♗xh7
- c) ♗g6
- d) ♘xh7

#20. White to move



What is White's best move?

- a) ♗x e7
- b) ♗x a7
- c) ♖d8
- d) ♖d7



**University Interscholastic League
A+ Chess Puzzle Contest
2023-2024 Invitational — Grades 4 & 5**

ANSWER KEY

Test

- | | | | |
|-----|---|-----|---|
| 1. | C | 11. | B |
| 2. | A | 12. | B |
| 3. | D | 13. | D |
| 4. | B | 14. | D |
| 5. | A | 15. | C |
| 6. | C | 16. | D |
| 7. | C | 17. | D |
| 8. | D | 18. | A |
| 9. | D | 19. | A |
| 10. | D | 20. | C |

Tiebreaker

- | | | | |
|----|---|----|---|
| 1. | B | 5. | C |
| 2. | C | 6. | C |
| 3. | C | 7. | A |
| 4. | C | 8. | B |