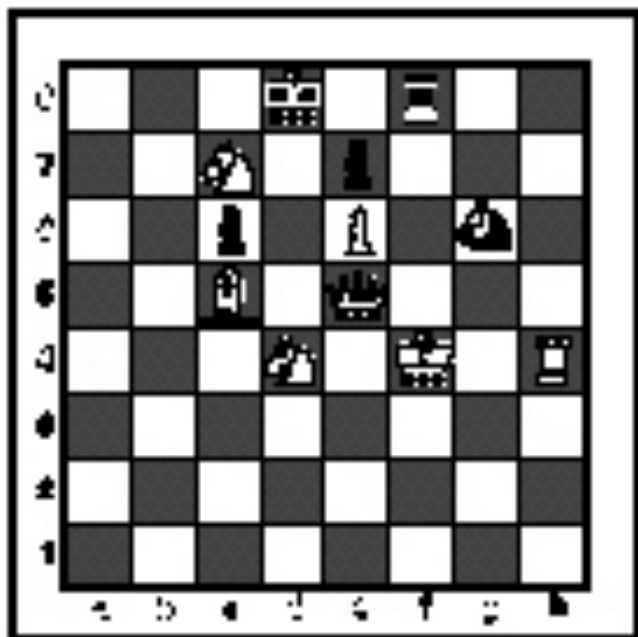


FALL/WINTER DISTRICT 2023-2024

A+ ACADEMICS



University Interscholastic League



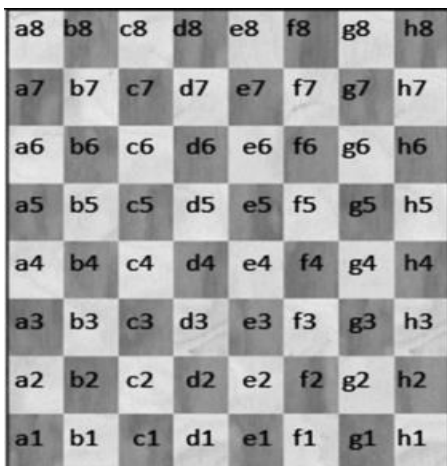
Chess Puzzle Solving






grades 4 & 5

**DO NOT OPEN TEST
UNTIL TOLD TO DO SO**

How to read and answer questions on this test

- To answer the questions on this test, you'll need to know how to read chess moves. It's simple to do.
- Every square on the board has an "address" made up of a letter and a number.

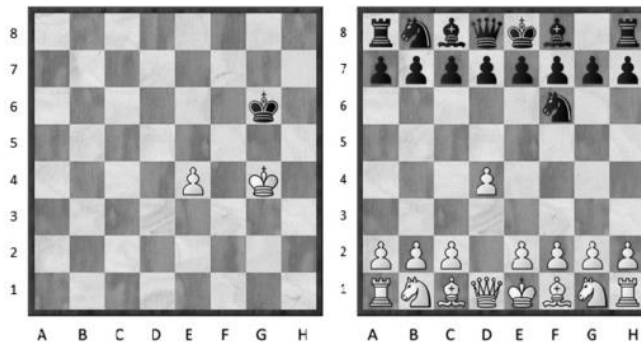


Piece Names	Each chessman can also be represented by a symbol, except for the pawn. (Figurine Notation)
King	
Queen	
Rook	
Bishop	
Knight	
Pawn	a-h (We write the file it's on.)

- To make them easy to read, the questions on this test use the figurine piece symbols on the right, above.
- When answering the puzzle questions, remember that white pawns move "up" the diagrams. Black pawns move "down" the diagrams.

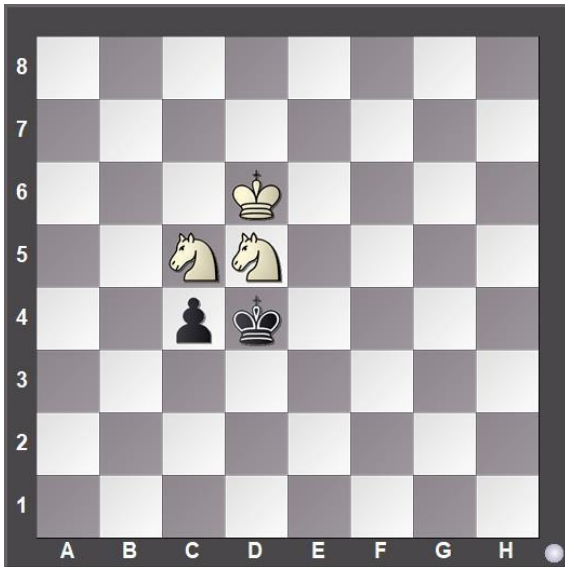
At right are two sample moves.

If you look closely at the diagrams in the questions below, you'll see that the frame around the diagram labels the ranks (1-8) and files (a-h) to help you.



White has just played **e4**. Black has just played ...  **f6**

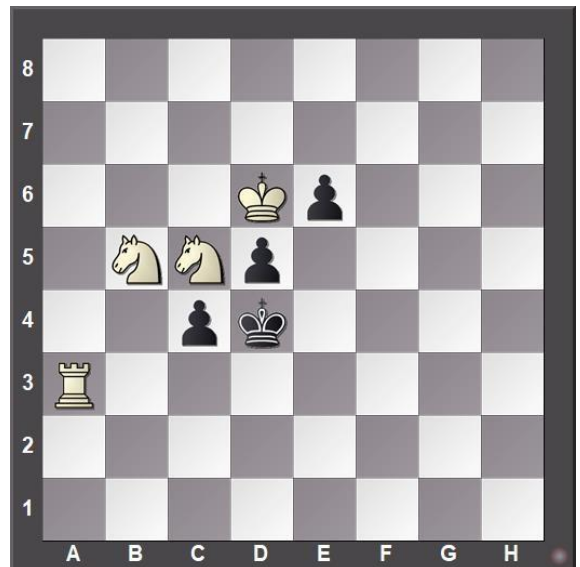
#1. Black to move



What term best describes this situation?

- a) Black is in checkmate.
- b) Black is in stalemate.
- c) Black is in check.
- d) None of the above.

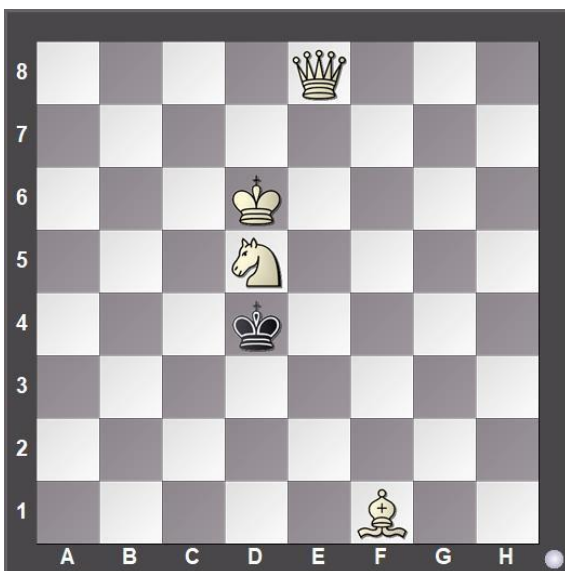
#2. Black to move



What term best describes this situation?

- a) Black is in checkmate.
- b) Black is in stalemate.
- c) Black is in check.
- d) None of the above.

#3. Black to move



What term best describes this situation?

- a) Black is in checkmate.
- b) Black is in stalemate.
- c) Black is in check.
- d) None of the above.

#4. White to move



Black just played g7 to g5. Which pawn can be captured?

- a) Black's f-pawn
- b) Black's d-pawn
- c) Black's g-pawn
- d) All of the above

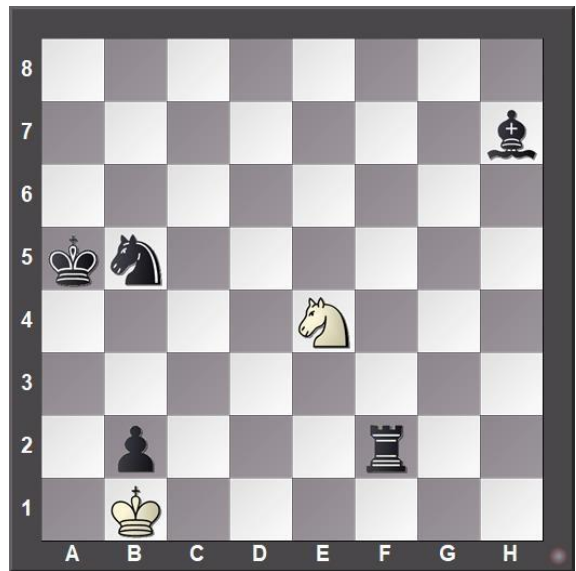
#5.



Which side has a material advantage?

- a) White
- b) It is even.
- c) Black
- d) It is not possible to tell.

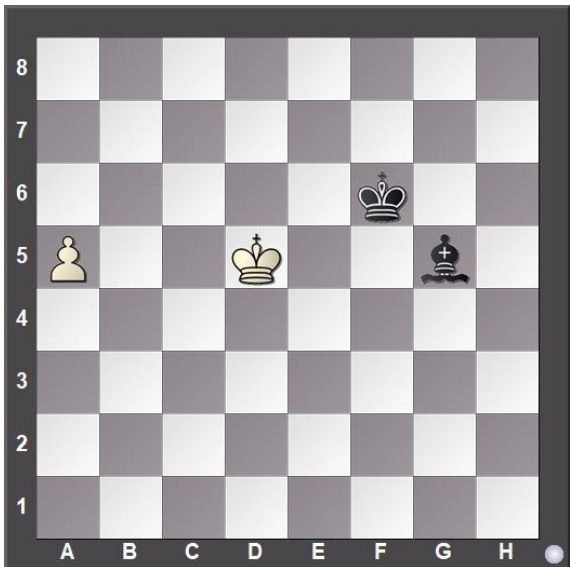
#6. Black to move



What is Black's best move?

- a) ♔×e4
- b) ♞c3
- c) ♞a3
- d) ♖f1

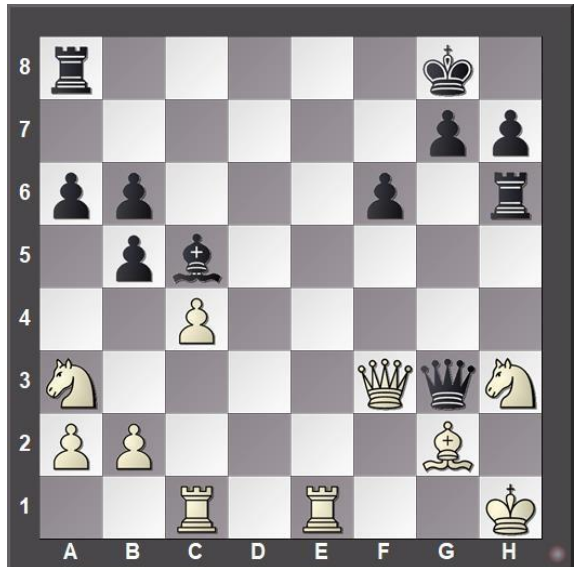
#7. White to move



With the best play, what is the outcome of the game?

- a) White wins
- b) Black wins
- c) Draw
- d) Impossible to tell

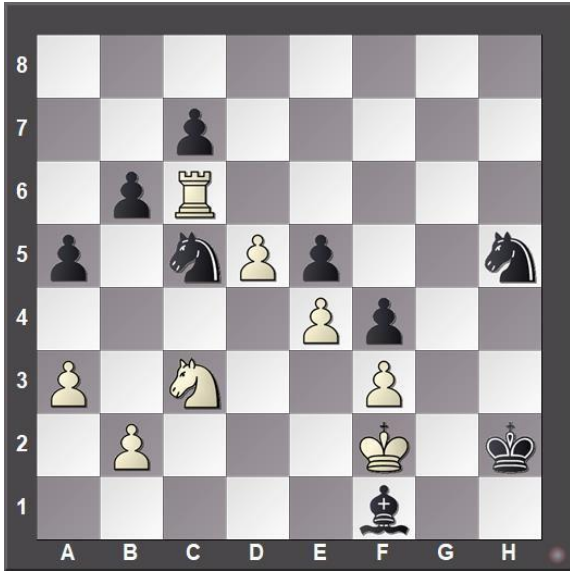
#8. Black to move



What is Black's best move?

- a) ♔×f3
- b) ♖×h3
- c) ♞f2
- d) ♔×e1

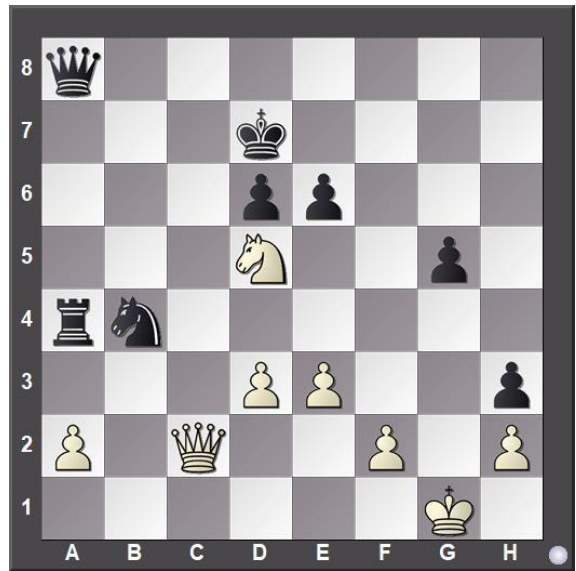
#9. Black to move



How many moves does Black need to checkmate White?

- a) 1 move
- b) 2 moves
- c) 3 moves
- d) Impossible to tell

#10. White to move



What is White's best move?

- a) ♖×b4
- b) ♖b6
- c) ♔×a4
- d) ♔c7

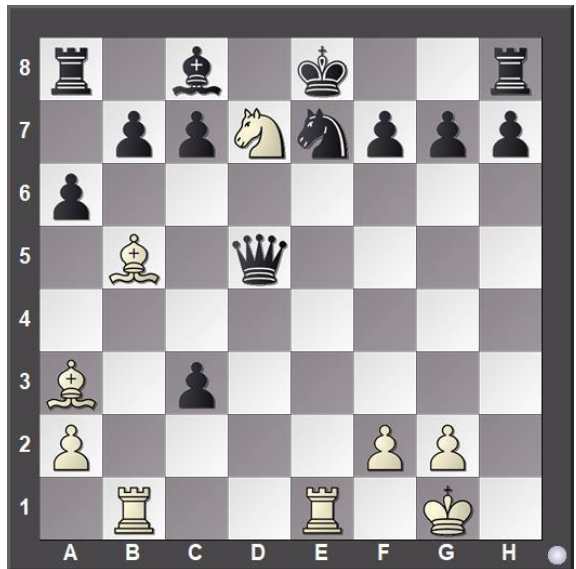
#11. White to move



What is White's best move?

- a) ♘e6
- b) ♘df5
- c) ♘hf5
- d) b3

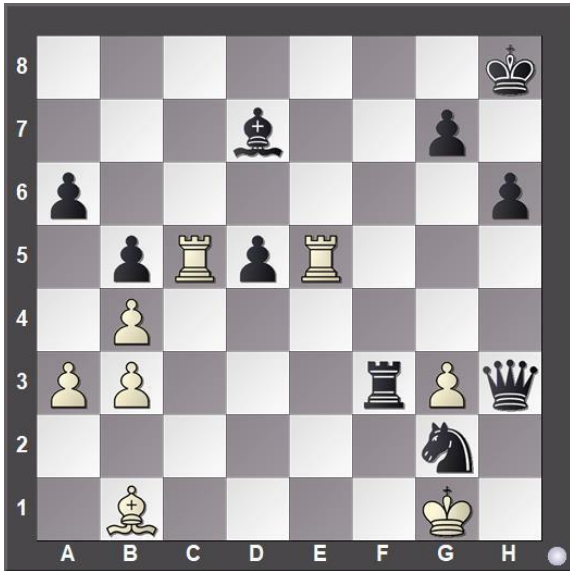
#12. White to move



What is White's best move?

- a) ♖bd1
- b) ♖e7
- c) ♘d7
- d) ♘f6

#13. White to move



If White can checkmate Black, how many moves does White need?

- a) 1 move
- b) 2 moves
- c) 3 moves
- d) Impossible to tell

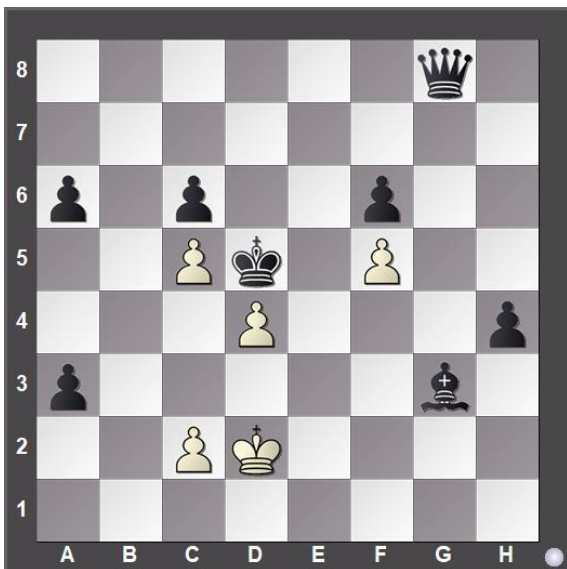
#14. Black to move



What is Black's best move?

- a) ♖xg2
- b) ♜xg2
- c) ♜g3
- d) ♚xh3

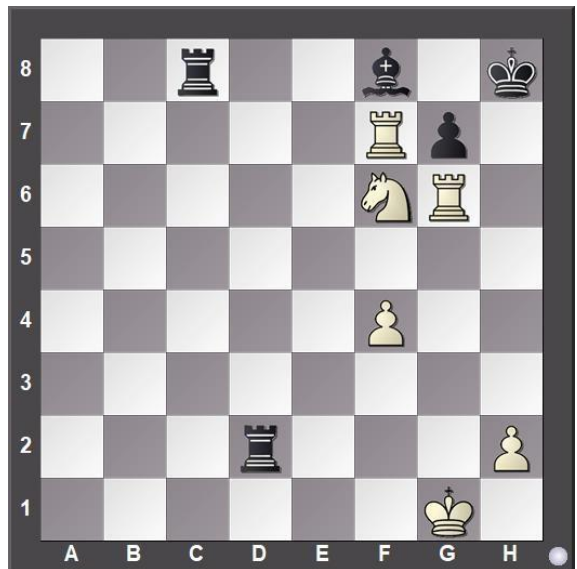
#15. White to move



What is the outcome of the game, with the best play?

- a) White wins.
- b) Black wins.
- c) Draw.
- d) It is not possible to tell.

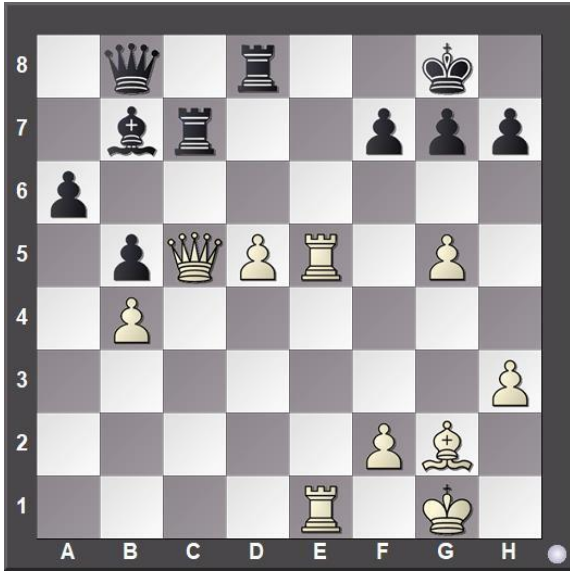
#16. White to move



What piece White should sacrifice to checkmate Black?

- a) White f7-Rook
- b) White g6-Rook
- c) White Knight
- d) None

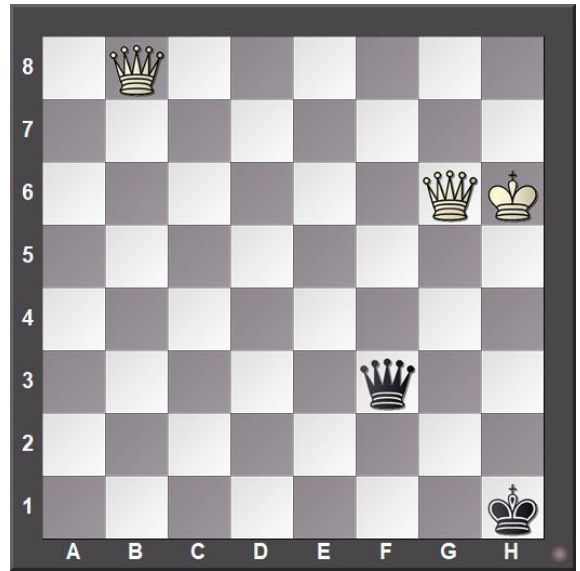
#17. White to move



What is White's best move?

- a) ♔e3
- b) ♖f8
- c) ♕xc7
- d) ♖b6

#18. Black to move



What is Black's best move?

- a) ♔e3
- b) ♖f8
- c) ♖f4
- d) ♖h3

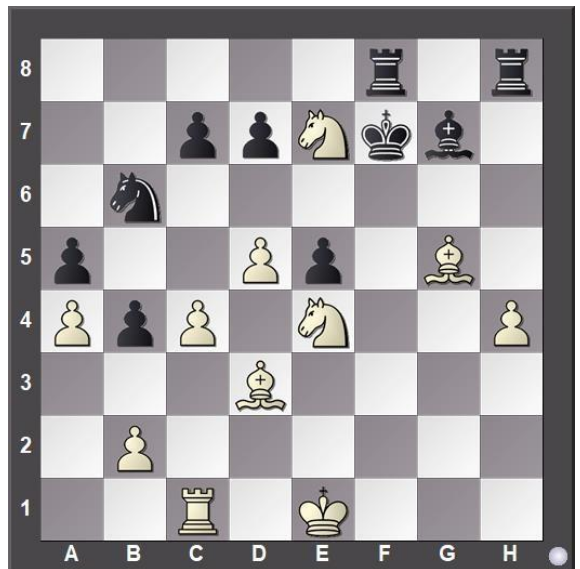
#19. White to move



If White can checkmate Black in three moves, what is the first move?

- a) ♖4e7
- b) ♗e7
- c) ♖xf8
- d) ♗f6

#20. White to move



What is White's best move?

- a) ♖c2
- b) ♗g6
- c) ♗d6
- d) ♗e2



**University Interscholastic League
A+ Chess Puzzle Contest
2023-2024 Fall/Winter — Grades 4 & 5**

ANSWER KEY

Test

- | | | | |
|-----|---|-----|---|
| 1. | D | 11. | D |
| 2. | A | 12. | D |
| 3. | B | 13. | C |
| 4. | D | 14. | D |
| 5. | C | 15. | A |
| 6. | B | 16. | B |
| 7. | A | 17. | C |
| 8. | B | 18. | C |
| 9. | B | 19. | D |
| 10. | D | 20. | C |

Tiebreaker

- | | | | |
|----|---|----|---|
| 1. | B | 5. | D |
| 2. | C | 6. | C |
| 3. | D | 7. | C |
| 4. | B | 8. | C |