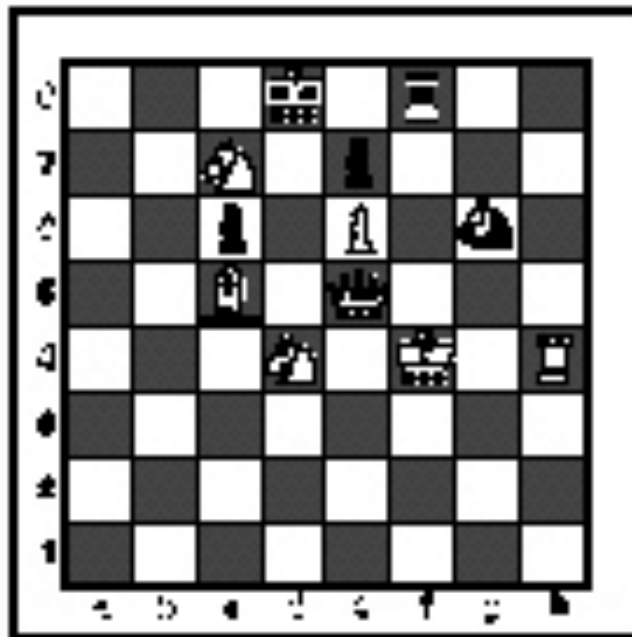


**INVITATIONAL 2021-2022**

**A+ ACADEMICS**



University Interscholastic League



# Chess Puzzle Solving


grades 4 & 5

**DO NOT OPEN TEST  
UNTIL TOLD TO DO SO**

## How to read and answer questions on this test

- To answer the questions on this test, you'll need to know how to read chess moves. It's simple to do.
- Every square on the board has an "address" made up of a letter and a number.

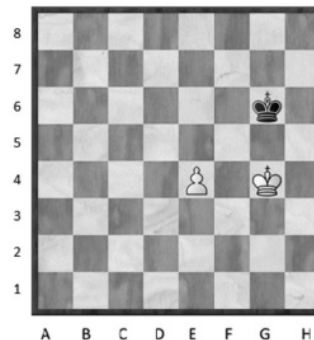


Piece Names	Each chessman can also be represented by a symbol, except for the pawn. (Figurine Notation)
King	
Queen	
Rook	
Bishop	
Knight	
Pawn	<b>a-h</b> (We write the file it's on.)

- To make them easy to read, the questions on this test use the figurine piece symbols on the right, above.
- When answering the puzzle questions, remember that white pawns move "up" the diagrams. Black pawns move "down" the diagrams.

At right are two sample moves.

If you look closely at the diagrams in the questions below, you'll see that the frame around the diagram labels the ranks (1-8) and files (a-h) to help you.

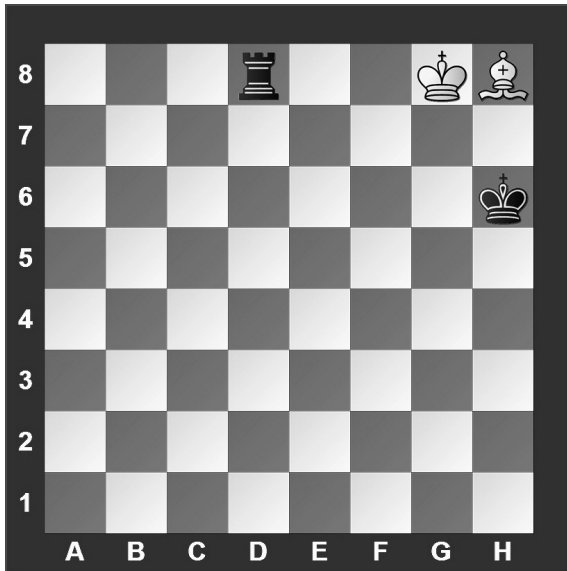


White has just played **e4**.



Black has just played ... **Nf6**.

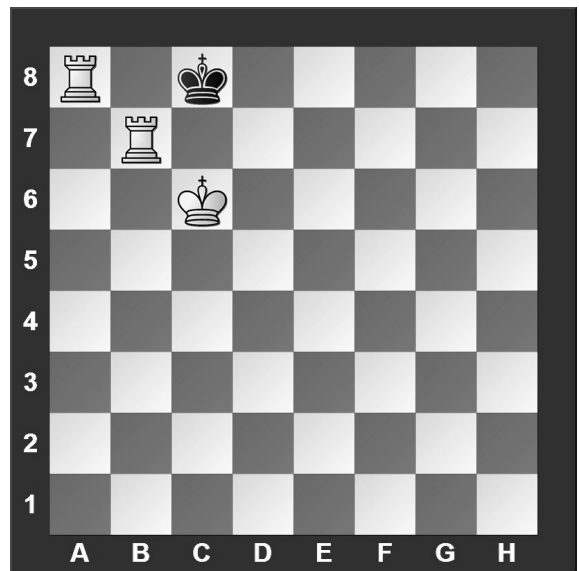
#1. White to move



What term best describes this situation?

- a) White is in check.
- b) White is in stalemate.
- c) White is in checkmate.
- d) None of the above.

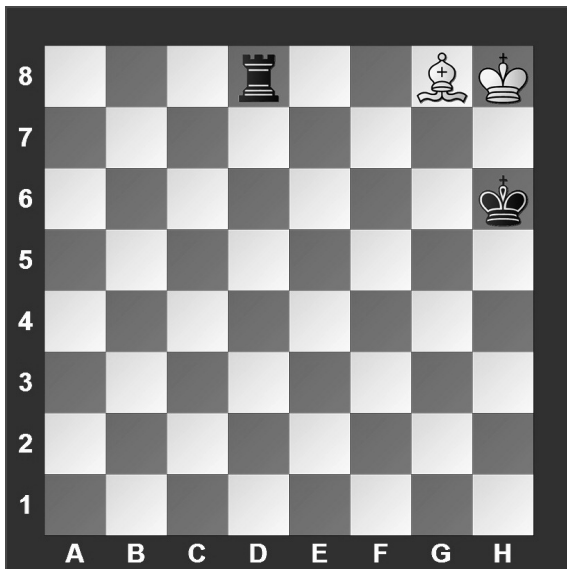
#2. Black to move



What term best describes this situation?

- a) Black is in checkmate.
- b) Black is in stalemate.
- c) Black is in check.
- d) None of the above.

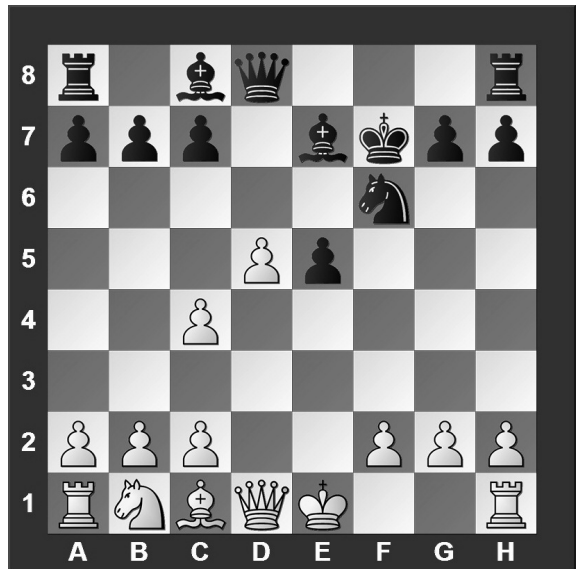
#3 White to move.



What term best describes this situation?

- a) White is in checkmate.
- b) White is in stalemate.
- c) White is in check.
- d) None of the above.

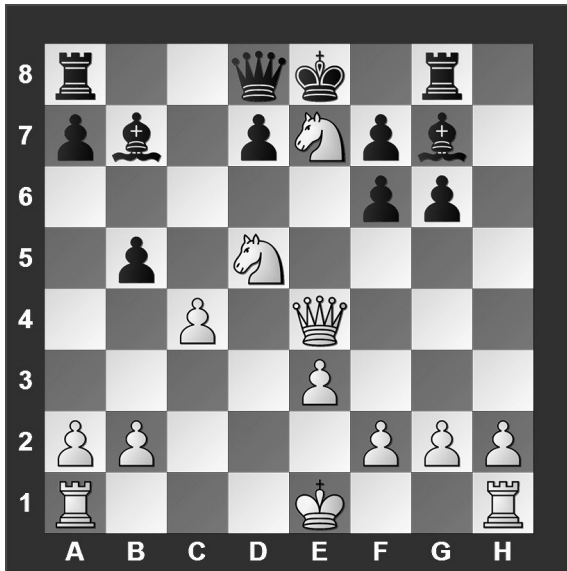
#4.



Which side has material advantage?

- a) White
- b) Black
- c) It's even.
- d) It's not possible to tell without knowing who is to move.

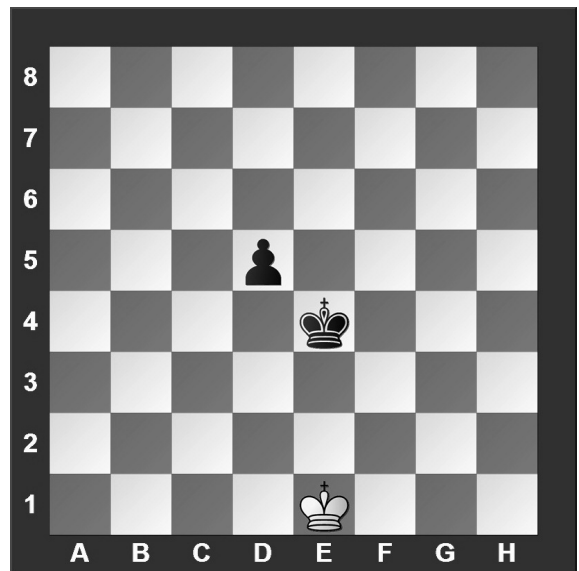
#5. White to move



White can checkmate Black in two moves, what's the first move?

- a) ♖xg8
- b) ♖xf6
- c) ♖xg6
- d) ♔xg6

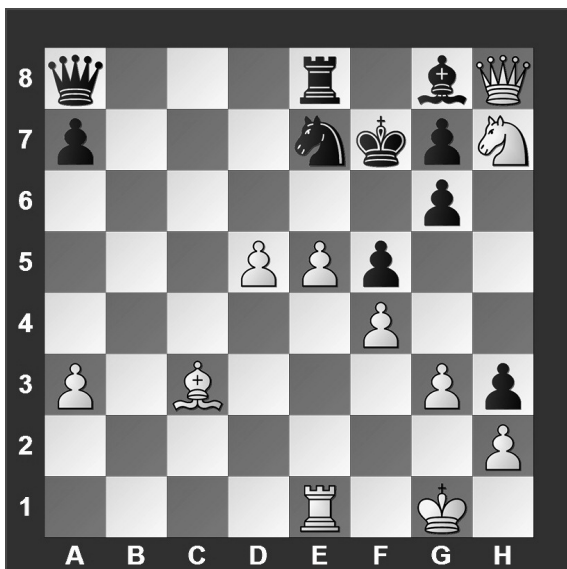
#6. White to move



With the best moves, what is the result of the game?

- a) White wins.
- b) Black wins.
- c) It is a draw.
- d) It is not possible to tell.

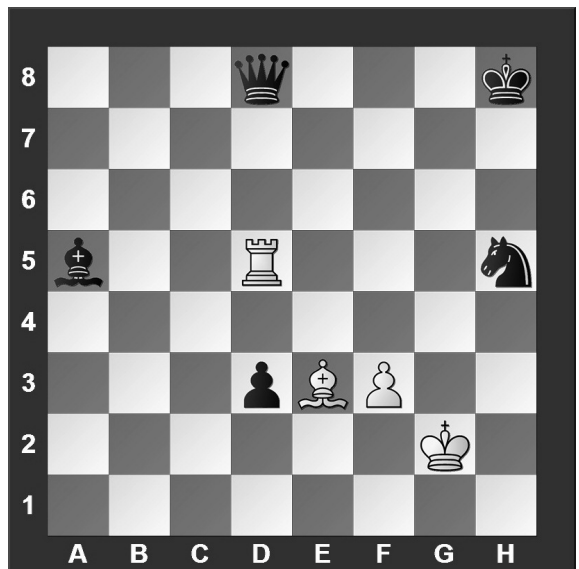
#7. White to move



What is White's best move?

- a) e6
- b) d6
- c) ♔xg7
- d) ♔xg8

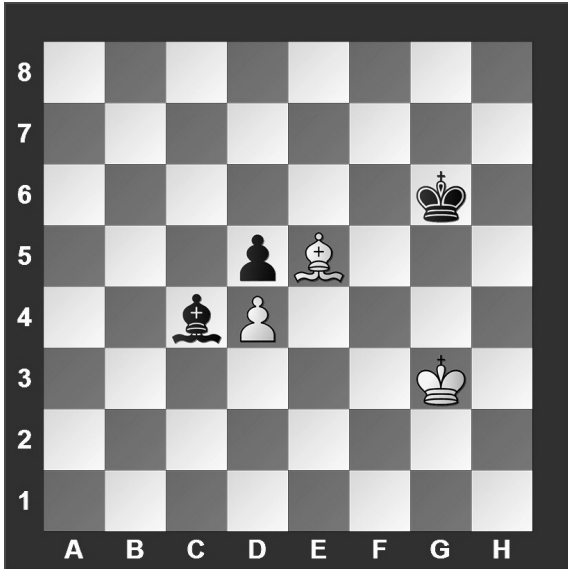
#8. White to move



What is White's best move?

- a) To take Black's queen.
- b) To take Black's knight.
- c) To take Black's pawn.
- d) To take Black's bishop.

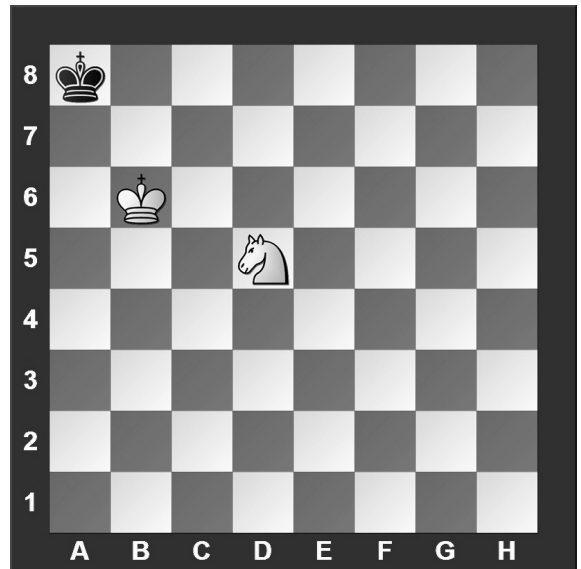
#9. White to move



What is the outcome of the game?

- a) White wins.
- b) Black wins.
- c) Draw.
- d) It is not possible to tell.

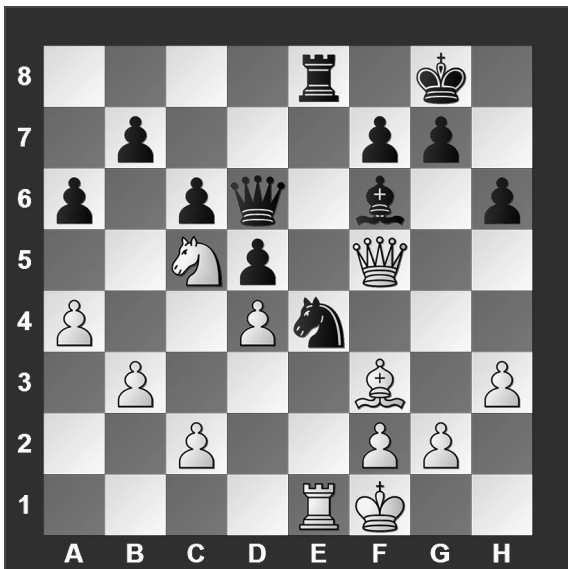
#10. White to move



What is the outcome of the game?

- a) White wins.
- b) Black wins.
- c) Draw.
- d) It is not possible to tell.

#11. White to move



What is White's best move?

- a) ♘×e4
- b) ♖×e4
- c) ♙×e4
- d) ♗×e4

#12. White to move



What is White's best move?

- a) ♖×e5
- b) ♗f6
- c) ♖×h6
- d) ♖b8

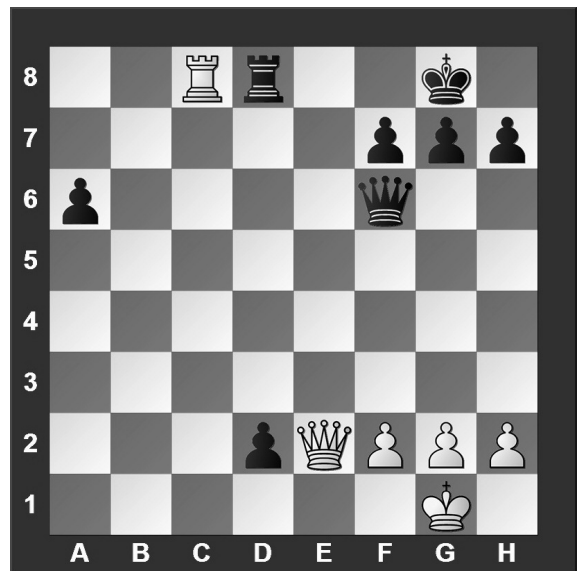
#13. White to move



What is White's best move?

- a) ♔×c4
- b) ♔×c6
- c) ♖d1
- d) b4

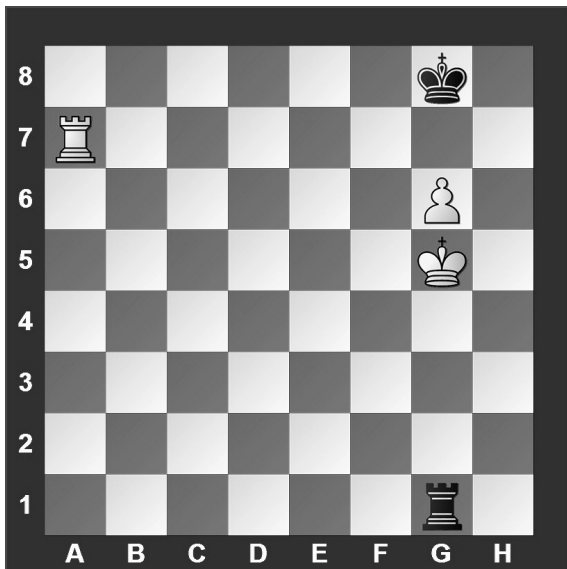
#14. White to move



If White can checkmate Black in two moves, what is the *first* move?

- a) ♔×d2
- b) ♔e8
- c) ♖×d8
- d) ♔×a6

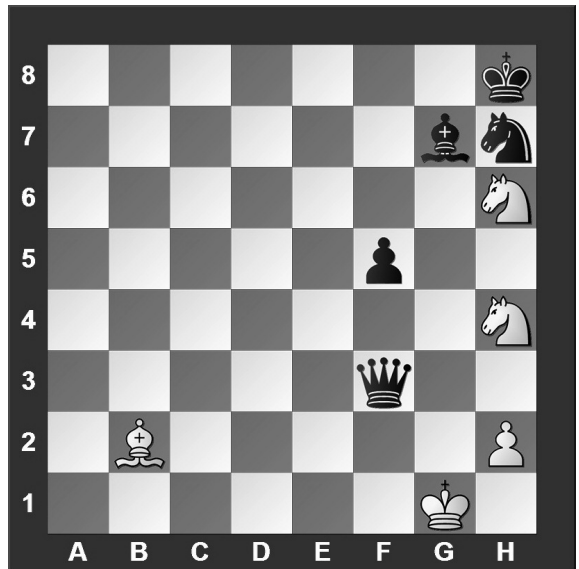
#15. White to move



What is the outcome of the game?

- a) White wins.
- b) Black wins.
- c) Draw.
- d) It is not possible to tell.

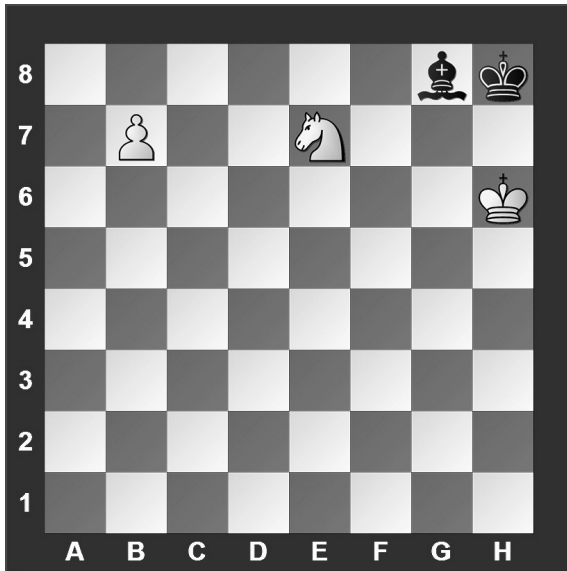
#16. White to move



What is White's best move?

- a) ♔×g7
- b) ♖f7
- c) ♖g6
- d) ♖×f3

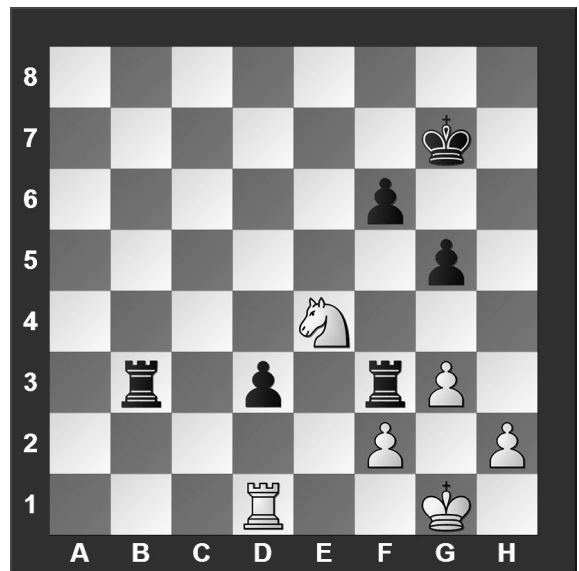
#17. White to move



What piece should White promote to?

- a) Rook.
- b) Queen.
- c) Bishop.
- d) Knight.

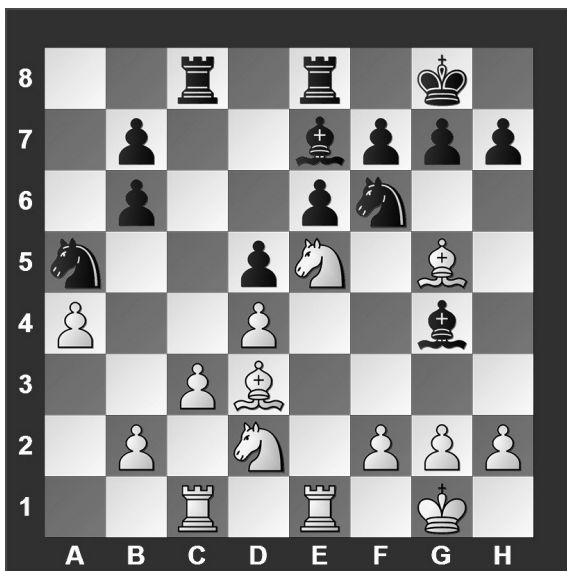
#18. White to move



What is White's best move?

- a) ♖×f6
- b) ♖×g5
- c) ♖d2
- d) ♔g2

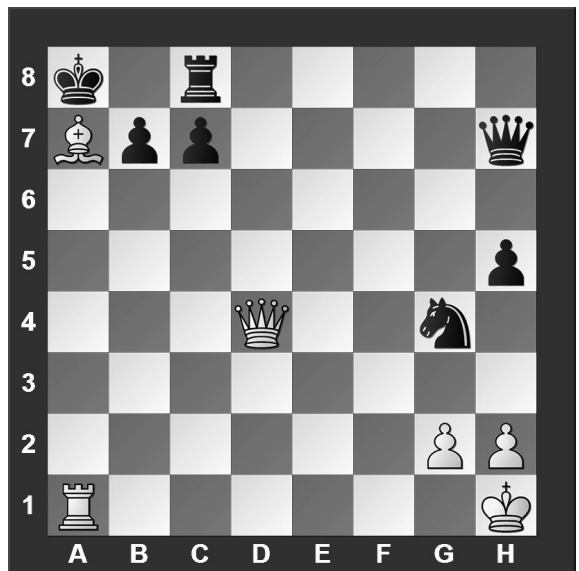
#19. White to move



What is White's best move?

- a) ♖×g4
- b) ♔×h7
- c) ♔×f6
- d) h3

#20. White to move



If White can checkmate Black in two moves, what's the *first* move?

- a) ♔b6
- b) ♔c5
- c) ♔b8
- d) White can't checkmate Black in two moves.



**University Interscholastic League  
A+ Chess Puzzle Contest  
2021-2022 Invitational — Grades 4 & 5**

**ANSWER KEY**

**Test**

- |      |       |
|------|-------|
| 1. A | 11. C |
| 2. A | 12. D |
| 3. B | 13. B |
| 4. B | 14. B |
| 5. C | 15. C |
| 6. C | 16. C |
| 7. A | 17. C |
| 8. A | 18. C |
| 9. C | 19. C |
| 10.C | 20. C |

**Tiebreaker**

- |      |      |
|------|------|
| 1. D | 5. A |
| 2. A | 6. D |
| 3. C | 7. D |
| 4. A | 8. C |