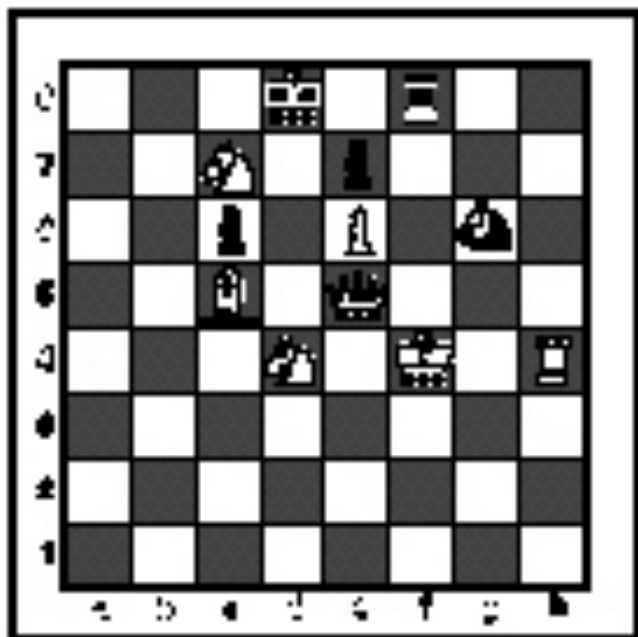


SPRING DISTRICT 2020-2021

A+ ACADEMICS



University Interscholastic League



Chess Puzzle Solving

grades 4 & 5

**DO NOT OPEN TEST
UNTIL TOLD TO DO SO**

How to read and answer questions on this test

- To answer the questions on this test, you'll need to know how to read chess moves. It's simple to do.
- Every square on the board has an "address" made up of a letter and a number.

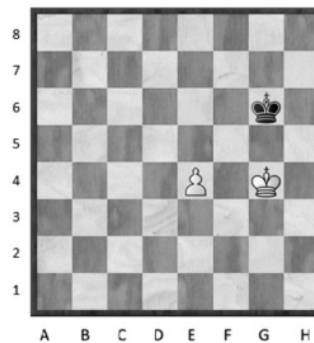


At right are two sample moves.

If you look closely at the diagrams in the questions below, you'll see that the frame around the diagram labels the ranks (1-8) and files (a-h) to help you.

Piece Names	Each chessman can also be represented by a symbol, except for the pawn. (Figurine Notation)
King	
Queen	
Rook	
Bishop	
Knight	
Pawn	a-h (We write the file it's on.)

- To make them easy to read, the questions on this test use the figurine piece symbols on the right, above.
- When answering the puzzle questions, remember that white pawns move "up" the diagrams. Black pawns move "down" the diagrams.

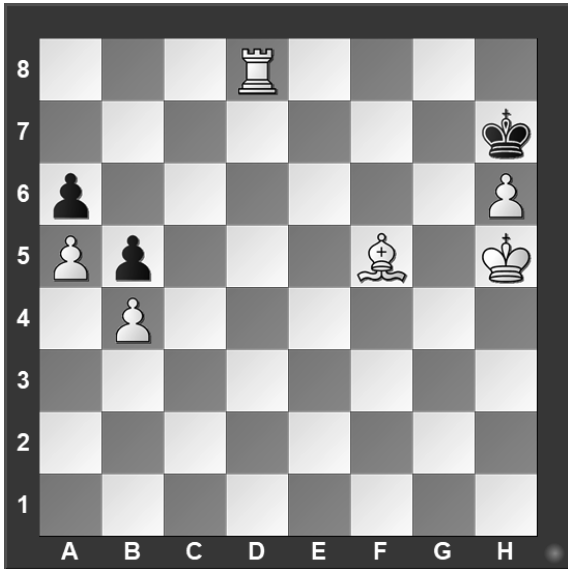


White has just played **e4**.



Black has just played ... **Nf6**.

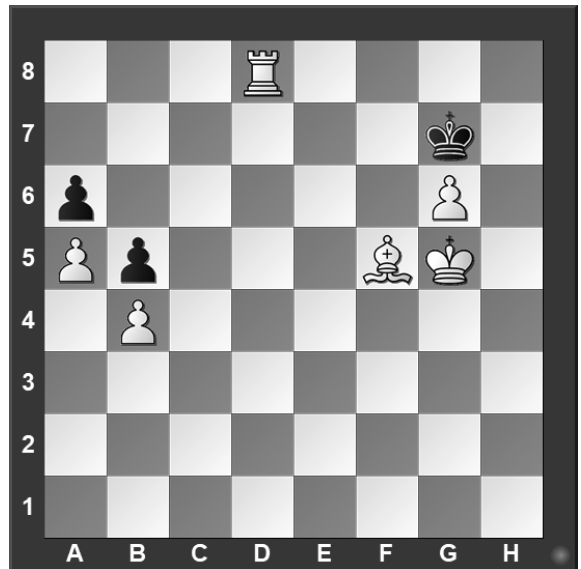
#1. Black to move



What term best describes this situation?

- a) Black is in checkmate.
- b) Black is in stalemate.
- c) Black is in check.
- d) None of the above.

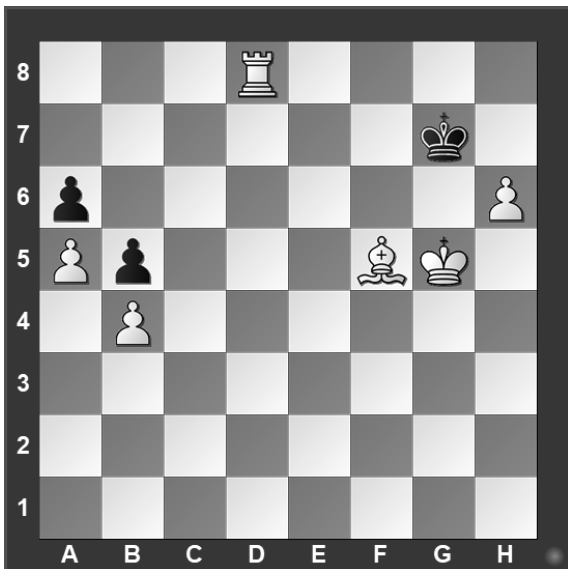
#2. Black to move



What term best describes this situation?

- a) Black is in checkmate.
- b) Black is in stalemate.
- c) Black is in check.
- d) None of the above.

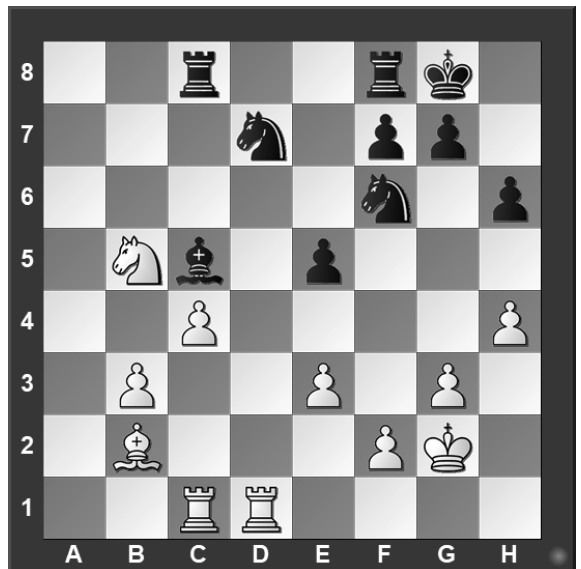
#3. Black to move



What term best describes this situation?

- a) Black is in checkmate.
- b) Black is in stalemate.
- c) Black is in check.
- d) None of the above.

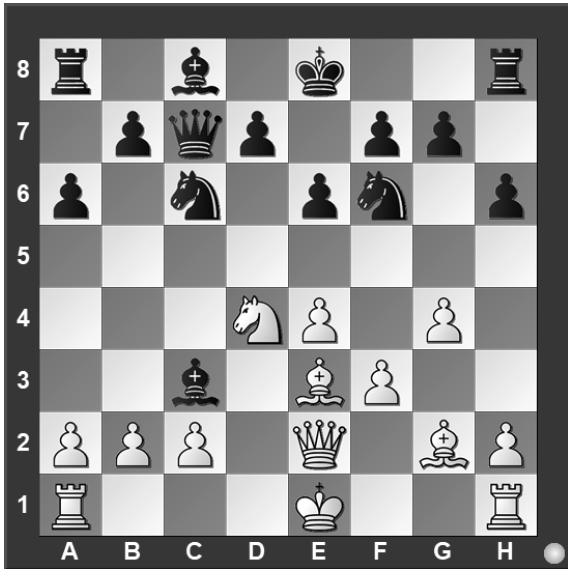
#4. White to move



Which side has material advantage?

- a) White.
- b) Black.
- c) It's even.
- d) It's not possible to tell.

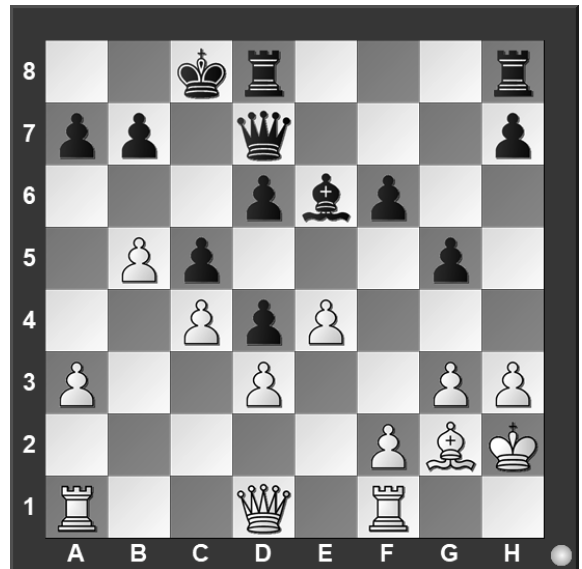
#5. White to move



Which move is possible for White?

- a) Short Castle .
- b) Long Castle.
- c) To capture the bishop.
- d) To capture the knight.

#6. White to move



Black just played c7 to c5. Which pawn can be captured?

- a) Black's b-pawn.
- b) Black's c-pawn.
- c) Black's d-pawn.
- d) White can't capture a pawn.

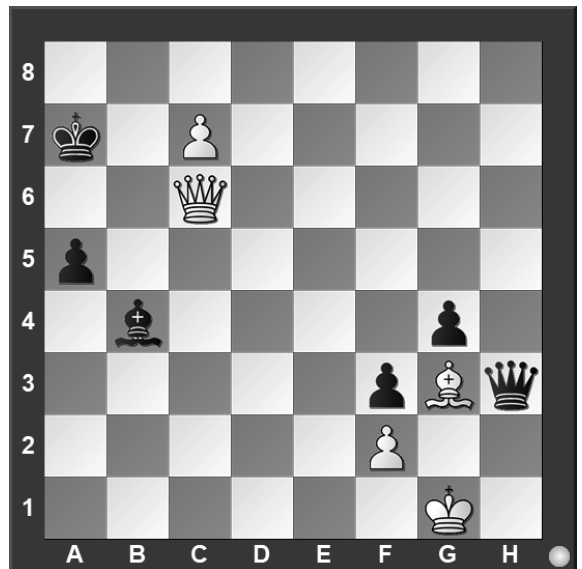
#7. White to move



How many moves does it take to checkmate Black?

- a) 1
- b) 2
- c) 3
- d) There is no checkmate

#8. White to move



What piece should White promote to?

- a) Queen
- b) Rook
- c) Bishop
- d) Knight

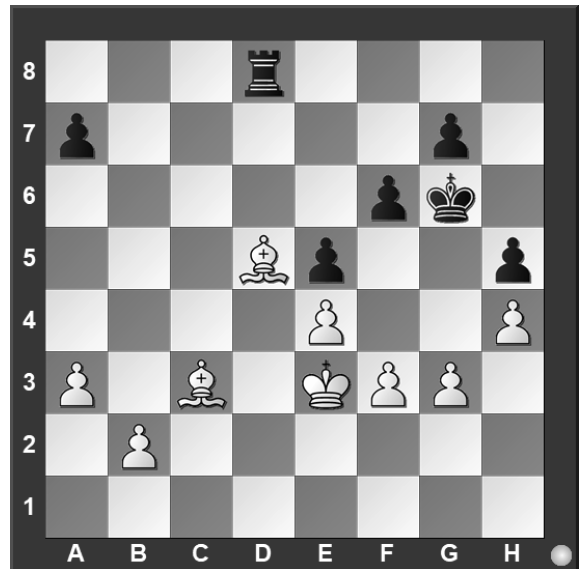
#9. White to move



What piece should White capture?

- a) Rook
- b) Bishop
- c) Knight
- d) pawn

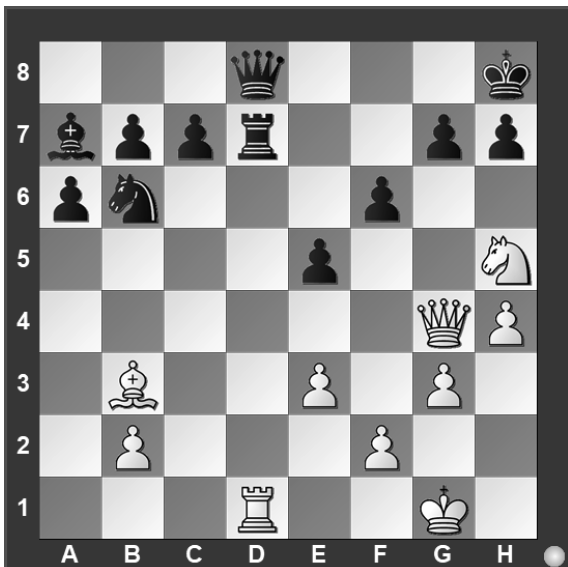
#10. White to move



With the best play, what is the outcome of the game?

- a) White wins.
- b) Black wins.
- c) Draw.
- d) It is not possible to tell.

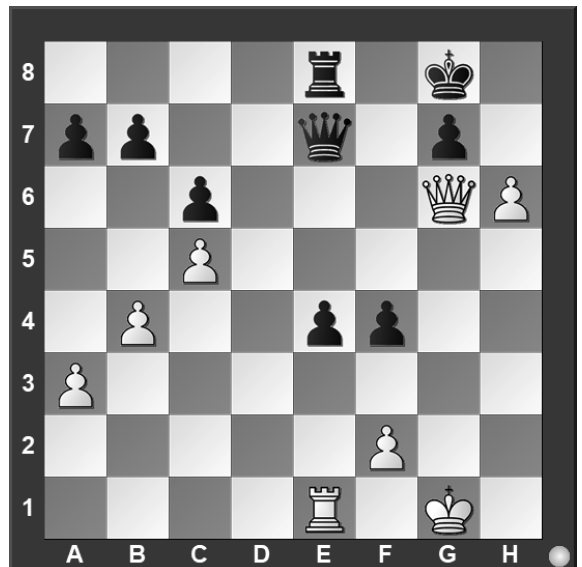
#11. White to move



What is White's best move?

- a) ♖xd7
- b) ♔xg7
- c) ♞xg7
- d) ♕e6

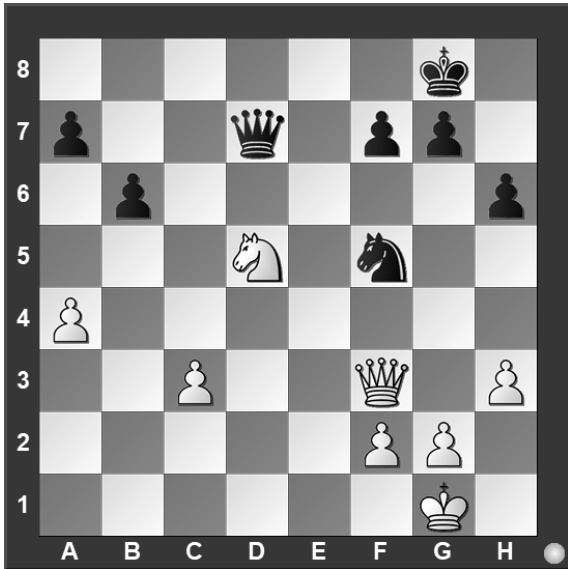
#12. White to move



What is White's best move?

- a) ♖xe4
- b) h×g7
- c) h7
- d) ♖f1

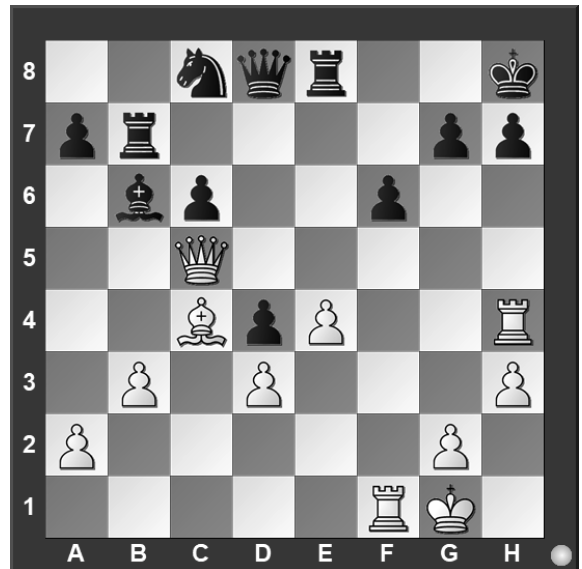
#13. White to move



What is White's best move?

- a) ♔d3
- b) ♔xf5
- c) a5
- d) g4

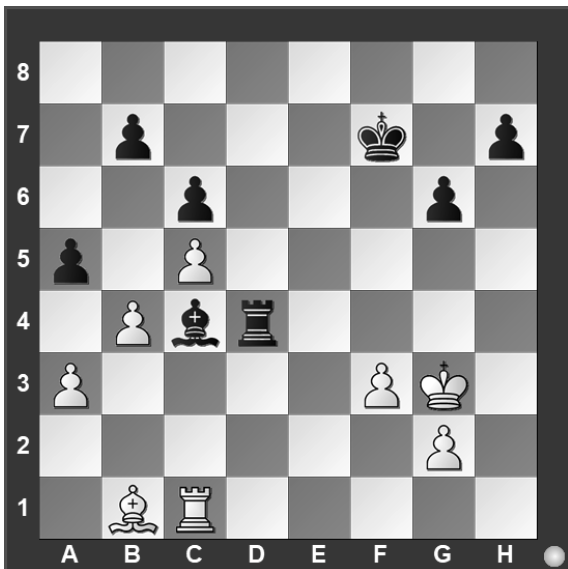
#14. White to move



If White can checkmate Black in two moves, what is the *first* move?

- a) ♔f5
- b) ♔h5
- c) ♔xc6
- d) ♖xh7

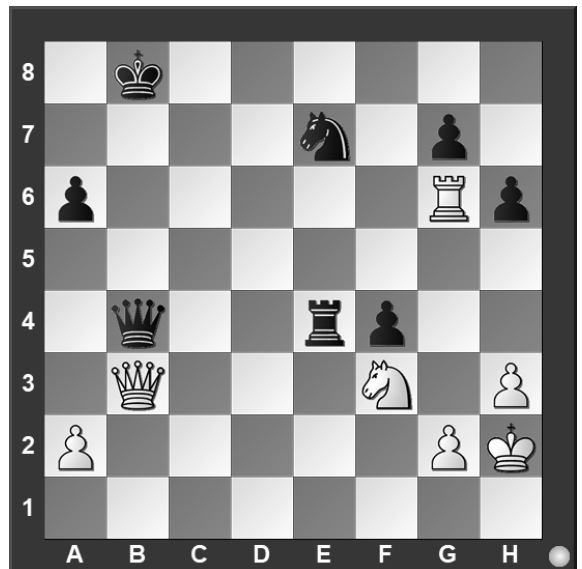
#15. White to move



What is White's best move?

- a) ♖f2
- b) ♖xc4
- c) ♖h1
- d) bxa5

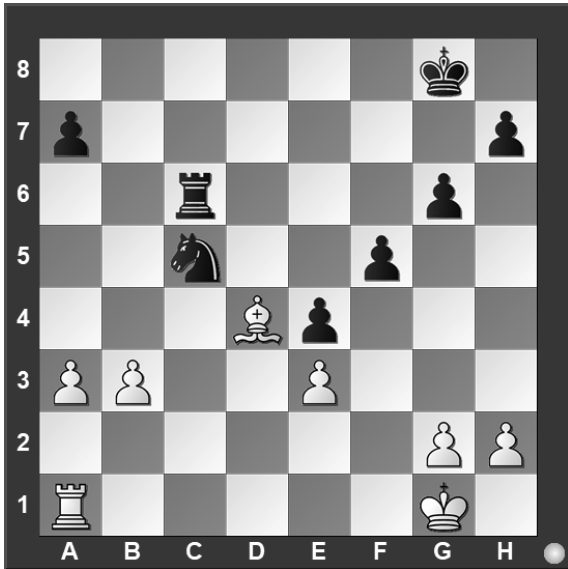
#16. White to move



What is White's best move?

- a) ♔xb4
- b) ♖b6
- c) ♖xg7
- d) ♖xa6

#17. White to move



What is White's best move?

- a) ♖b1
- b) ♖c1
- c) ♗xc5
- d) b4

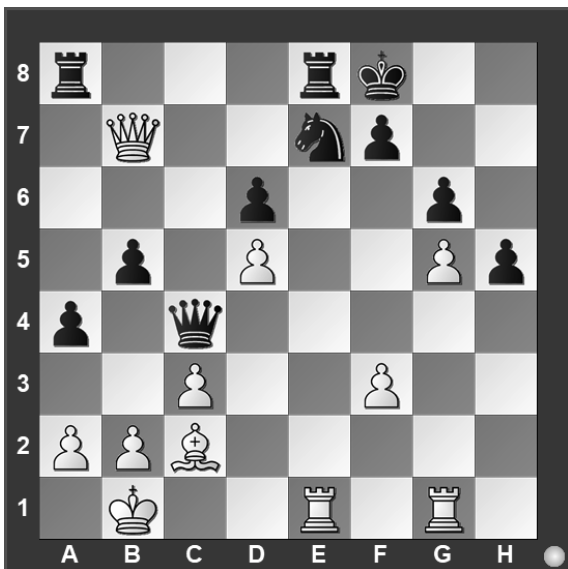
#18. White to move



What is White's best move?

- a) ♖c7
- b) ♖b8
- c) ♖xf7
- d) ♖xc6

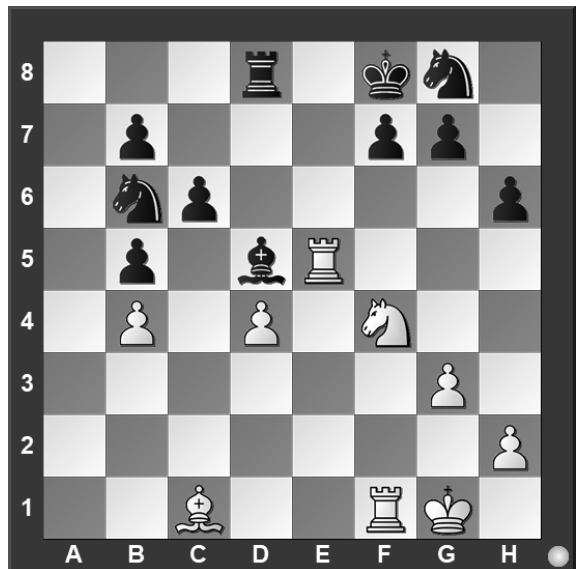
#19. White to move



What is White's best move?

- a) ♖b6
- b) ♖e4
- c) ♖xe7
- d) f4

#20. White to move



What is White's best move?

- a) ♖xd5
- b) ♗xd5
- c) ♗g6
- d) h4



**University Interscholastic League
A+ Chess Puzzle Contest
2020-2021 Spring — Grades 4 & 5**

ANSWER KEY

Test

- | | |
|------|-------|
| 1. A | 11. B |
| 2. B | 12. A |
| 3. C | 13. B |
| 4. B | 14. D |
| 5. C | 15. B |
| 6. B | 16. B |
| 7. C | 17. B |
| 8. D | 18. B |
| 9. C | 19. C |
| 10.A | 20. C |

Tiebreaker

- | | |
|------|------|
| 1. D | 5. C |
| 2. C | 6. D |
| 3. C | 7. B |
| 4. B | 8. A |