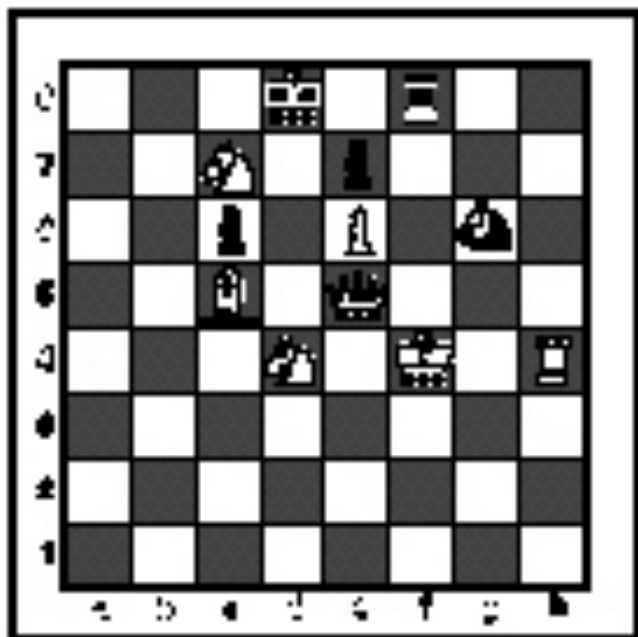


**SPRING DISTRICT 2019-2020**

**A+ ACADEMICS**



University Interscholastic League



# Chess Puzzle Solving

grades 4 & 5

**DO NOT OPEN TEST  
UNTIL TOLD TO DO SO**

## How to read and answer questions on this test

- To answer the questions on this test, you'll need to know how to read chess moves. It's simple to do.
- Every square on the board has an "address" made up of a letter and a number.

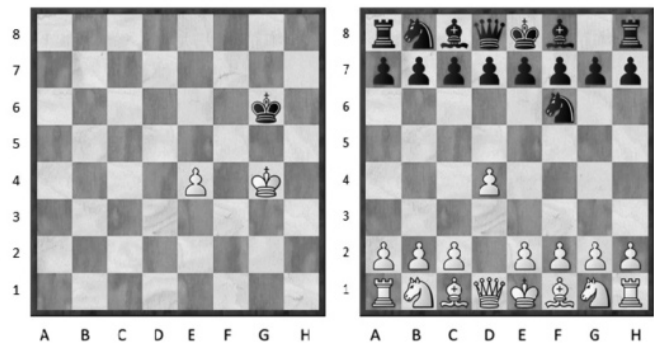


At right are two sample moves.

If you look closely at the diagrams in the questions below, you'll see that the frame around the diagram labels the ranks (1-8) and files (a-h) to help you.

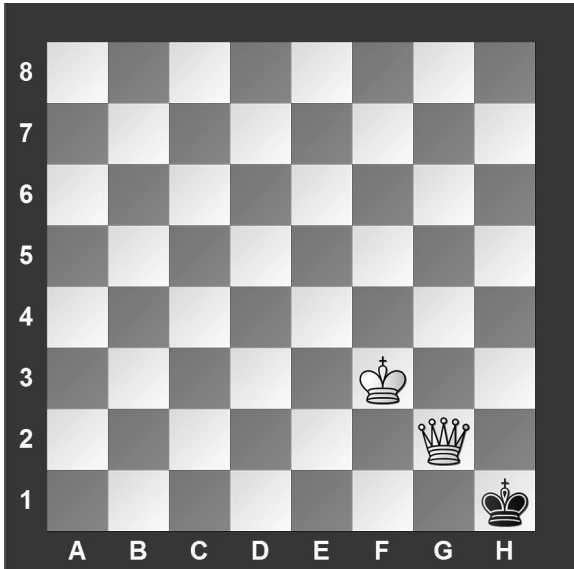
Piece Names	Each chessman can also be represented by a symbol, except for the pawn. (Figurine Notation)
King	
Queen	
Rook	
Bishop	
Knight	
Pawn	<b>a-h</b> (We write the file it's on.)

- To make them easy to read, the questions on this test use the figurine piece symbols on the right, above.
- When answering the puzzle questions, remember that white pawns move "up" the diagrams. Black pawns move "down" the diagrams.



White has just played **e4**      Black has just played ... **f6**

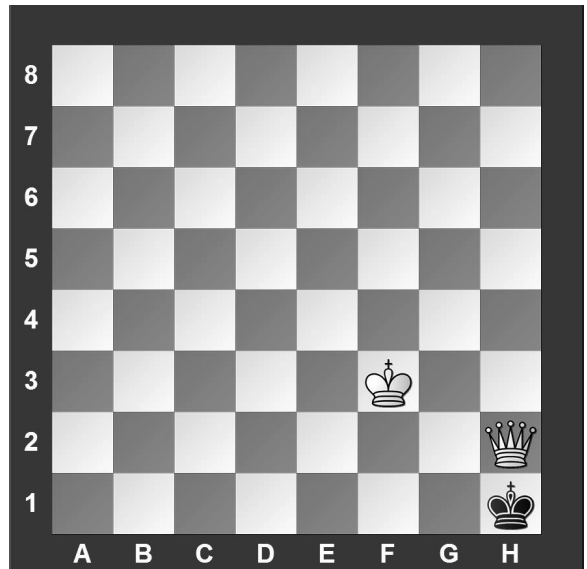
#1. Black to move



What term best describes this situation?

- a) Black is in checkmate.
- b) Black is in stalemate.
- c) Black is in check.
- d) None of the above.

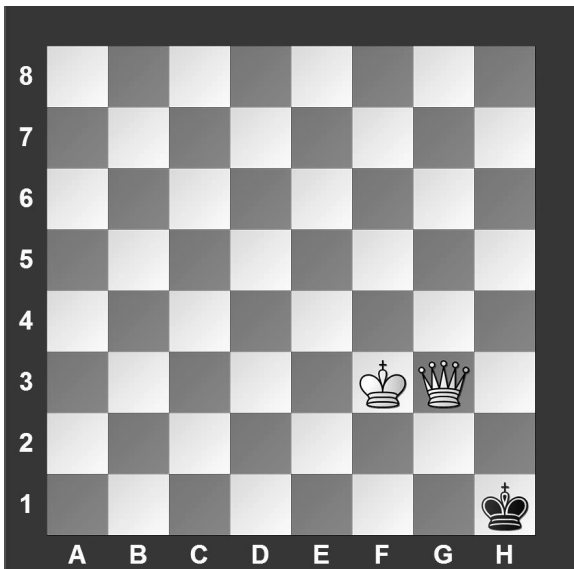
#2. Black to move



What term best describes this situation?

- a) Black is in checkmate.
- b) Black is in stalemate.
- c) Black is in check.
- d) None of the above.

#3 Black to move.



What term best describes this situation?

- a) Black is in checkmate.
- b) Black is in stalemate.
- c) Black is in check.
- d) None of the above.

#4.



Which side has material advantage?

- a) White
- b) Black
- c) It's even.
- d) It's not possible to tell

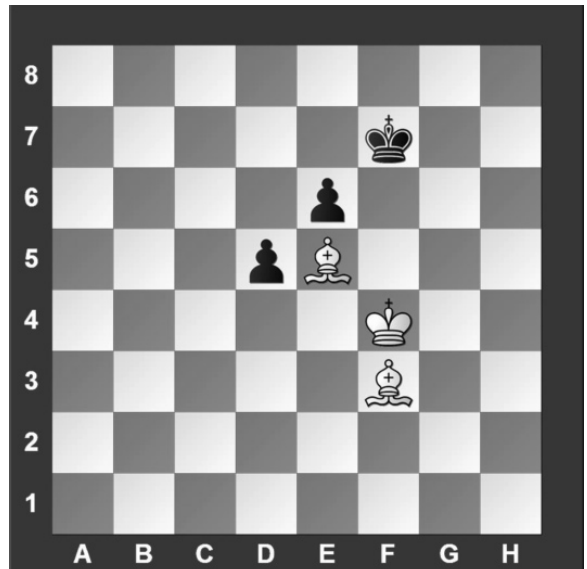
#5. White to move



Which move below is possible for White?

- a) Short Castle
- b) Long Castle
- c) Take Black's Knight
- d) Take Black's Queen

#6. White to move



With the best moves, what is the outcome of the game?

- a) Black wins.
- b) White wins.
- c) Draw.
- d) It is impossible to tell.

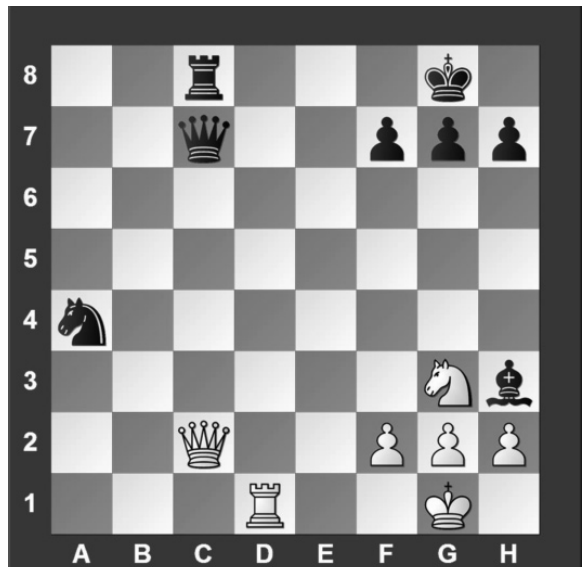
#7. White to move



Black just played c7 to c5. Which pawn can be captured?

- a) Black's e-pawn
- b) Black's f-pawn
- c) Black's c-pawn
- d) White can't capture a pawn

#8. White to move



What piece should White capture?

- a) Queen
- b) Knight
- c) Bishop
- d) Pawn

#9. White to move



What is White's best move?

- a) ♔f6
- b) ♕g7
- c) ♖×d5
- d) ♘×f4

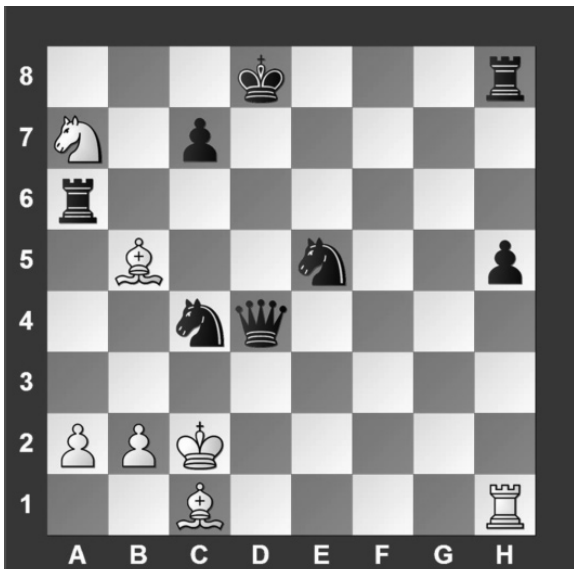
#10. White to move



What is White's best move?

- a) ♔h5
- b) ♔d7
- c) ♔e6
- d) ♖f3

#11. White to move



What is White's best move?

- a) ♘c6
- b) ♔×a6
- c) ♔g5
- d) ♖d1

#12. White to move



What is White's best move?

- a) ♖×h6
- b) ♖×h6
- c) g×f5
- d) ♖a6

#13. White to move



What is White's best move?

- a) ♖×a8
- b) ♖×h6
- c) ♖×d7
- d) ♕g4

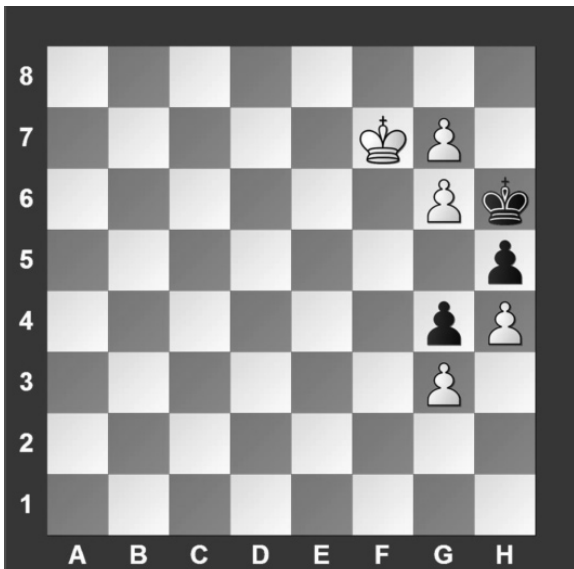
#14. White to move



What is White's best move?

- a) ♖×d8
- b) ♕×h7
- c) ♖g5
- d) ♖c2

#15. White to move



What piece should White promote to?

- a) Queen
- b) Rook
- c) Bishop
- d) Knight

#16. White to move



What is White's best move?

- a) ♖×e8
- b) ♕d4
- c) ♖e1
- d) f4

#17. White to move



What is White's best move?

- a) ♔×g7
- b) ♖f6
- c) b4
- d) ♖×g7

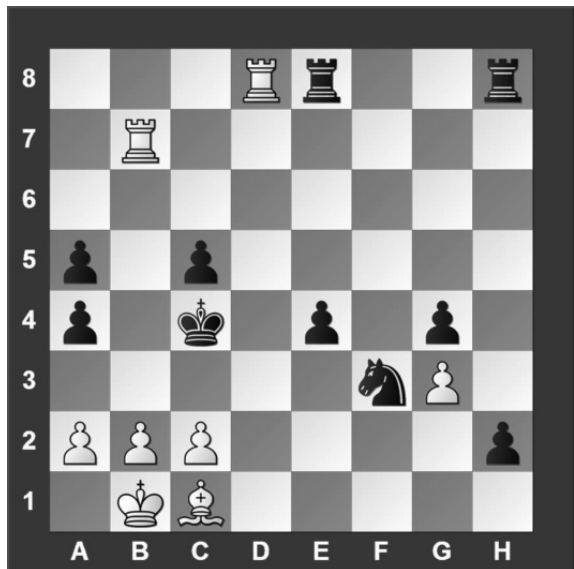
#18. White to move



What is White's best move?

- a) ♖e3
- b) ♗×f4
- c) ♖e1
- d) ♖e6

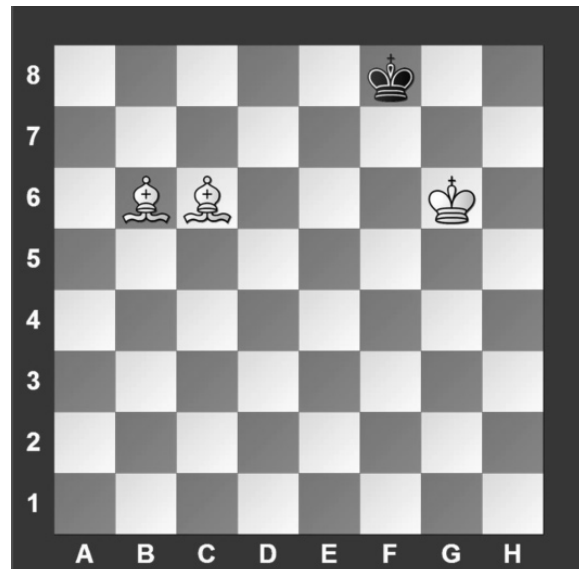
#19. White to move



If White can checkmate Black in three moves, what's the *first* move?

- a) ♗d2
- b) ♖d1
- c) c3
- d) b3

#20. White to move



With the best play, how many moves will it take White to checkmate Black?

- a) 1
- b) 2
- c) 3
- d) 4



**University Interscholastic League  
A+ Chess Puzzle Contest  
2019-2020 Spring — Grades 4 & 5**

**ANSWER KEY**

**Test**

- |       |       |
|-------|-------|
| 1. A  | 11. C |
| 2. C  | 12. A |
| 3. B  | 13. C |
| 4. A  | 14. B |
| 5. C  | 15. D |
| 6. B  | 16. B |
| 7. C  | 17. B |
| 8. A  | 18. A |
| 9. A  | 19. D |
| 10. C | 20. C |

**Tiebreaker**

- |      |      |
|------|------|
| 1. B | 5. B |
| 2. A | 6. D |
| 3. C | 7. A |
| 4. D | 8. C |