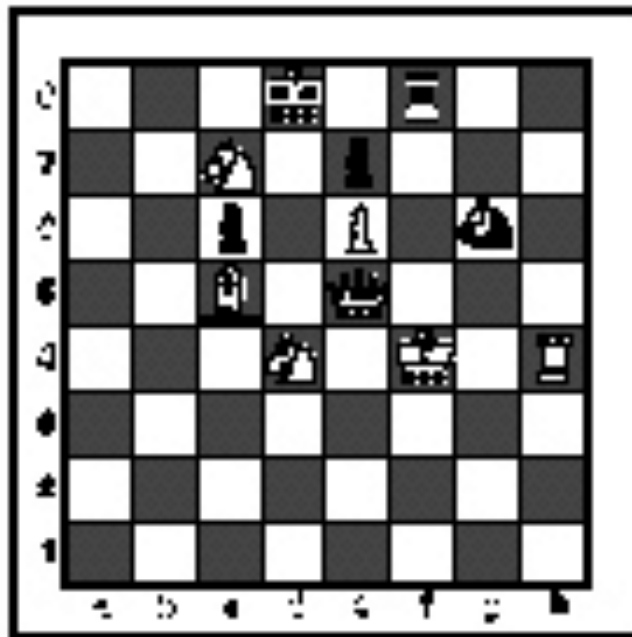


**FALL/WINTER DISTRICT 2018-2019**

**A+ ACADEMICS**



University Interscholastic League



# Chess Puzzle Solving

grades 4 & 5

**DO NOT OPEN TEST  
UNTIL TOLD TO DO SO**

## How to read and answer questions on this test

- To answer the questions on this test, you'll need to know how to read chess moves. It's simple to do.
- Every square on the board has an "address" made up of a letter and a number.

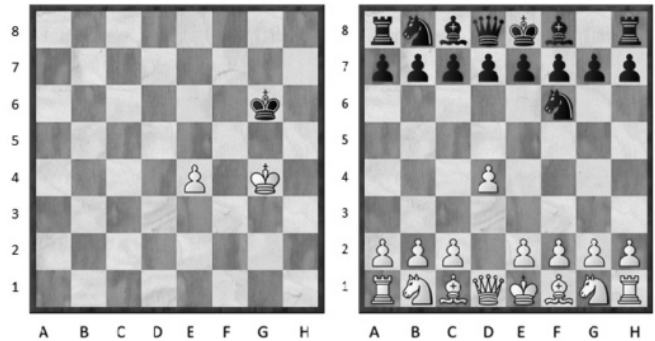


Piece Names	Each chessman can also be represented by a symbol, except for the pawn. (Figurine Notation)
King	
Queen	
Rook	
Bishop	
Knight	
Pawn	<b>a-h</b> (We write the file it's on.)

- To make them easy to read, the questions on this test use the figurine piece symbols on the right, above.
- When answering the puzzle questions, remember that white pawns move "up" the diagrams. Black pawns move "down" the diagrams.

### At right are two sample moves.

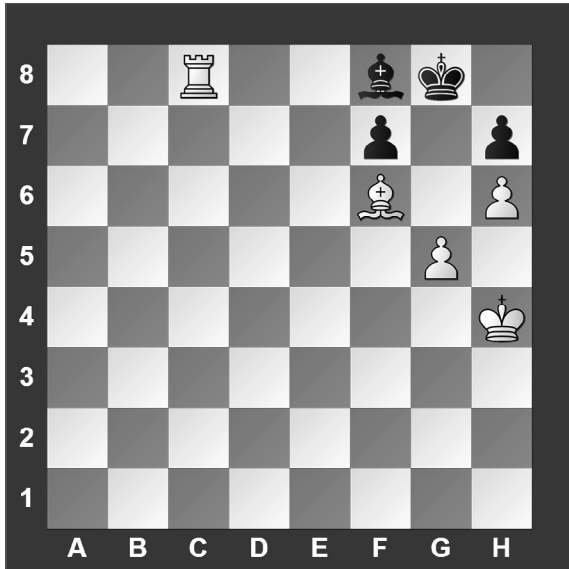
If you look closely at the diagrams in the questions below, you'll see that the frame around the diagram labels the ranks (1-8) and files (a-h) to help you.



White has just played **e4**.

Black has just played ... **Nf6**.

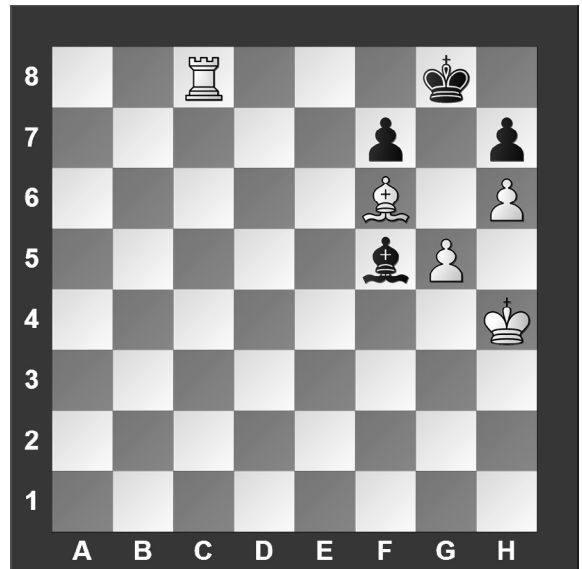
#1. Black to move



What term best describes this situation?

- a) Black is in checkmate.
- b) Black is in stalemate.
- c) Black is in check.
- d) None of the above.

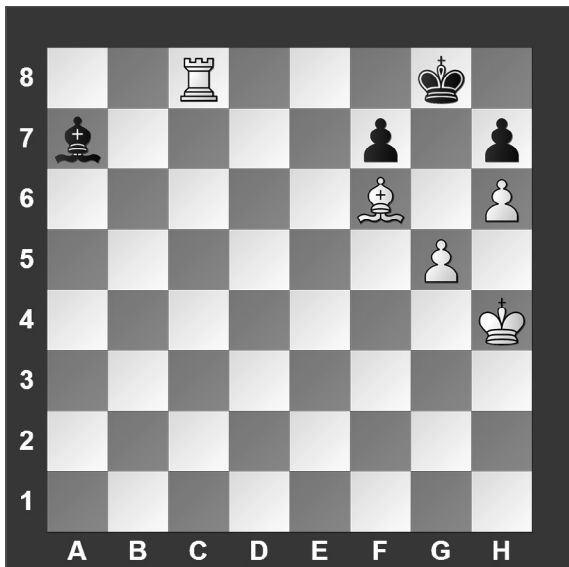
#2. Black to move



What term best describes this situation?

- a) Black is in checkmate.
- b) Black is in stalemate.
- c) Black is in check.
- d) None of the above.

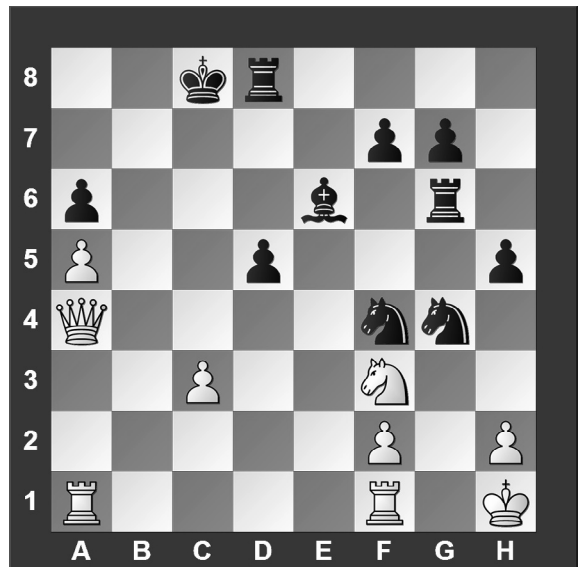
#3 Black to move.



What term best describes this situation?

- a) Black is in checkmate.
- b) Black is in stalemate.
- c) Black is in check.
- d) None of the above.

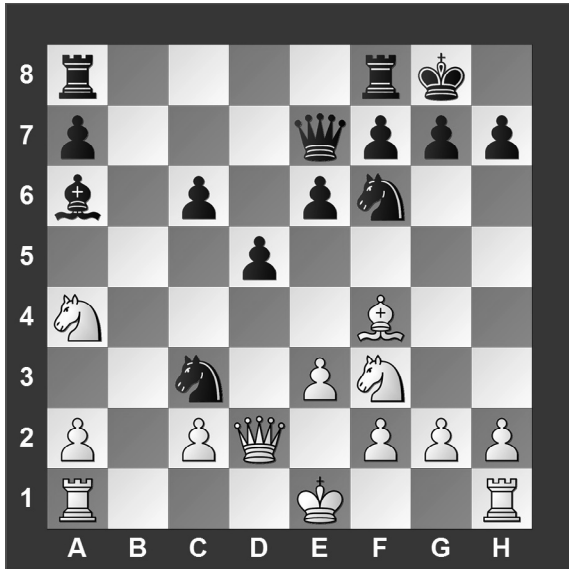
#4.



Which side has material advantage?

- a) White
- b) Black
- c) It's even.
- d) It's not possible to tell without knowing who is to move.

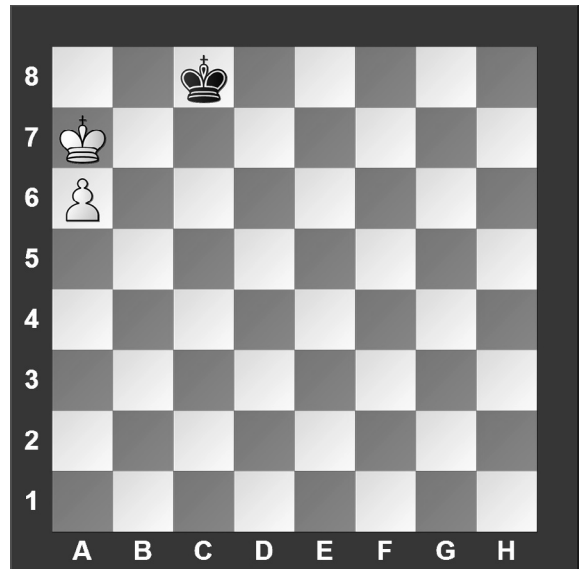
#5. White to move



Which move below is possible for White?

- a) Short Castle .
- b) Long Castle.
- c) To capture the knight.
- d) Move the king.

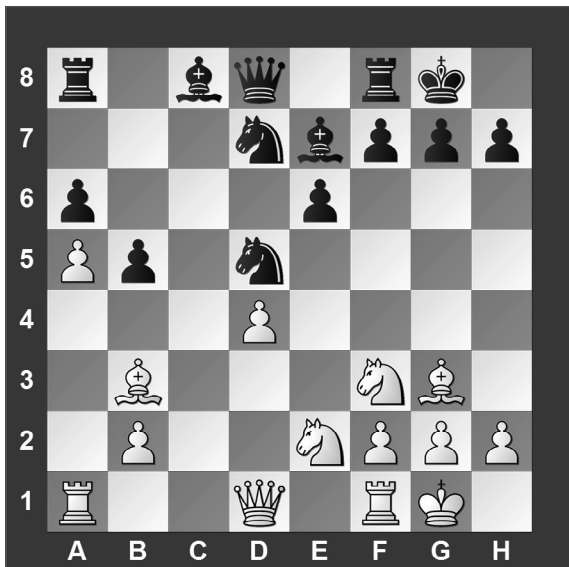
#6. White to move



With the best play, what is the outcome of the game?

- a) White wins.
- b) Black wins.
- c) It is a draw.
- d) It is not possible to tell.

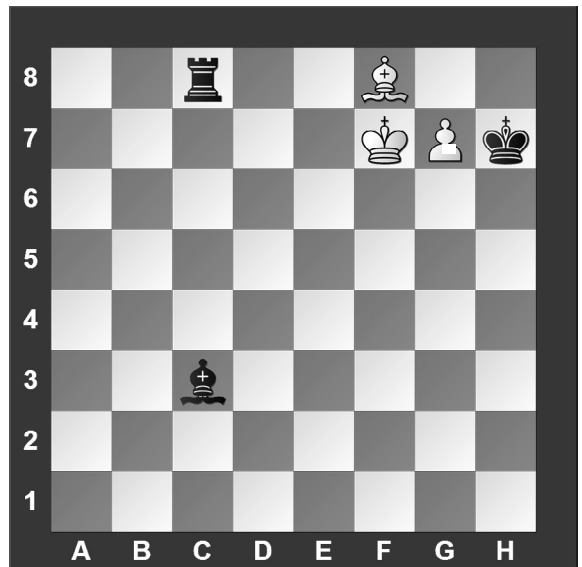
#7. White to move



Black just played b7 to b5. Which pawn can be captured?

- a) Black's e-pawn
- b) Black's b-pawn
- c) Black's g-pawn
- d) White can't capture a pawn.

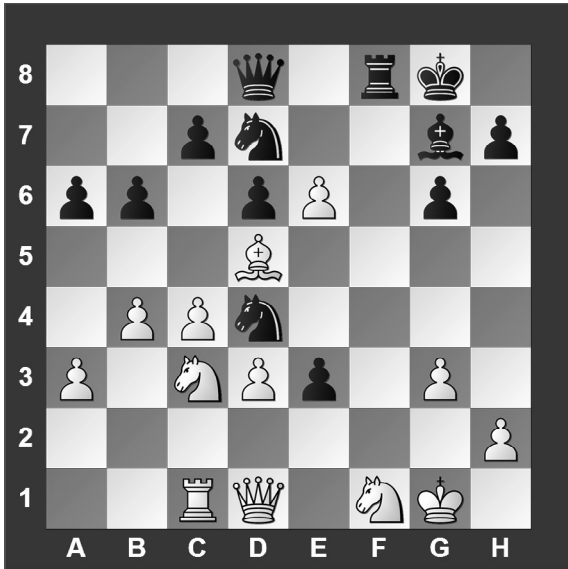
#8. White to move



What piece should White promote to?

- a) Queen.
- b) Knight.
- c) Rook.
- d) Bishop.

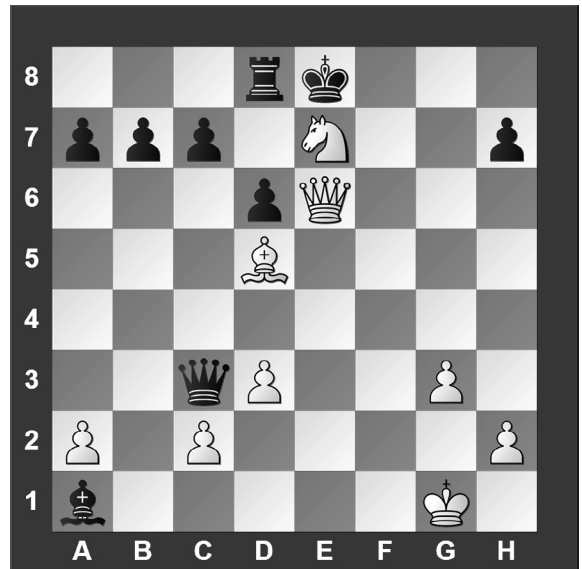
#9. White to move



What is White's best move?

- a)  $e \times d7$
- b)  $e7$
- c)  $\text{N} \times e3$
- d)  $\text{N} \times e2$

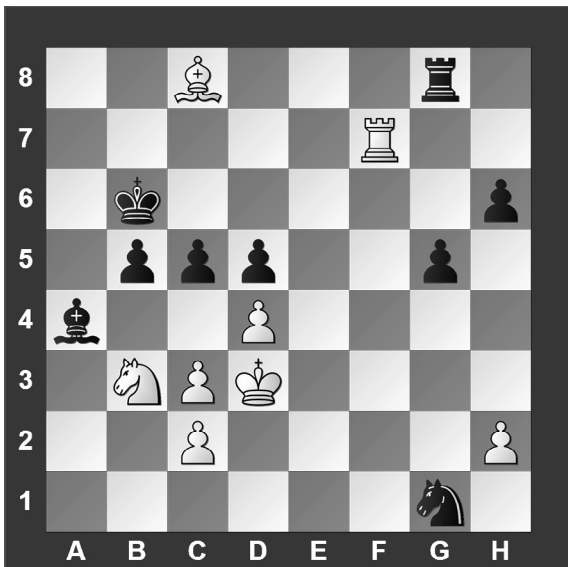
#10. White to move



If White can checkmate Black in one move, what's the right move?

- a)  $\text{N} \times g6$
- b)  $\text{R} \times f7$
- c)  $\text{R} \times g8$
- d)  $\text{N} \times f5$

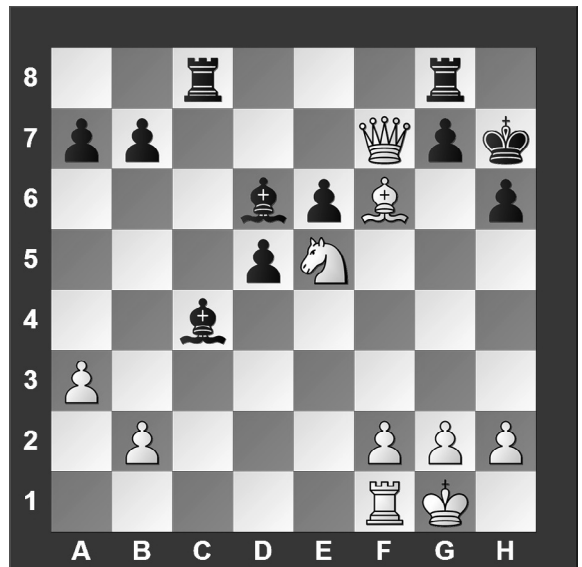
#11. White to move



If White can checkmate Black in two moves, what's the *first* move?

- a)  $d \times c5$
- b)  $\text{R} \times b7$
- c)  $\text{N} \times c5$
- d)  $\text{R} \times f6$

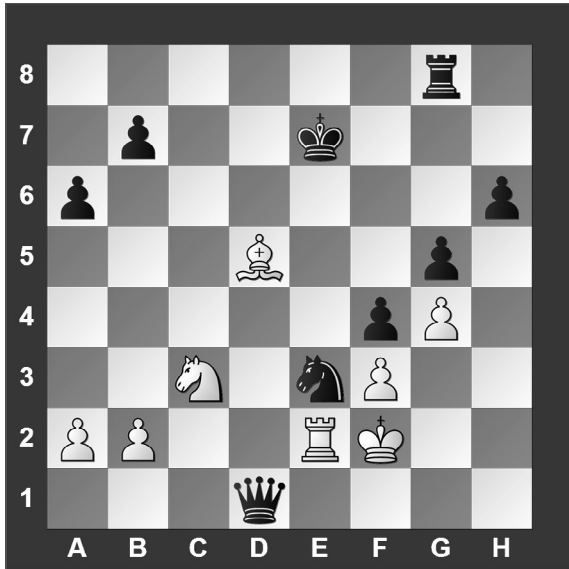
#12. White to move



What is White's best move?

- a)  $\text{N} \times d7$
- b)  $\text{N} \times c4$
- c)  $\text{R} \times e6$
- d)  $\text{R} \times g6$

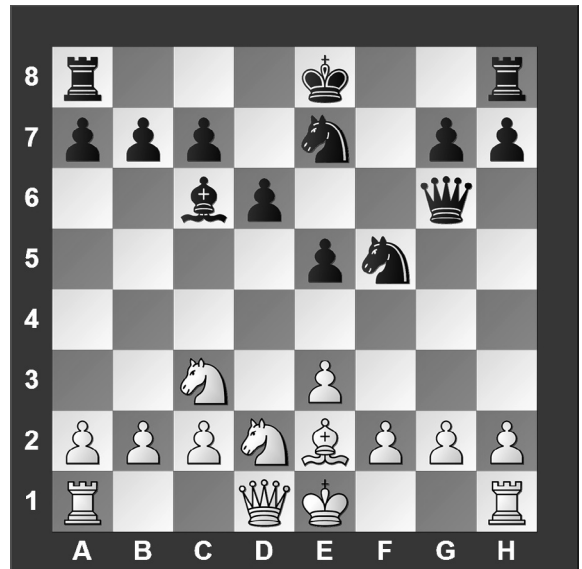
#13. White to move



What piece should White capture?

- a) Black's queen
- b) Black's knight
- c) Black's rook
- d) Black's pawn

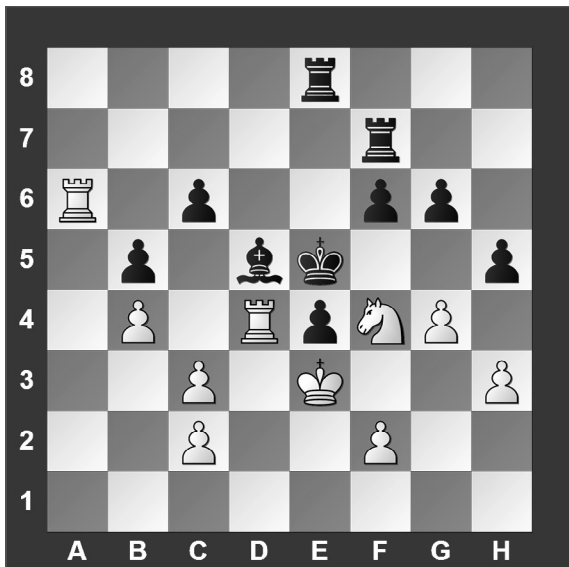
#14. White to move



What is White's best move?

- a) e4
- b)  $\text{Nc4}$
- c)  $\text{Qh5}$
- d)  $\text{Qf3}$

#15. White to move



If White can checkmate Black in two moves, what's the first move?

- a)  $\text{Rxd5}$
- b)  $\text{Nxc6}$
- c)  $\text{Rxe4}$
- d) c4

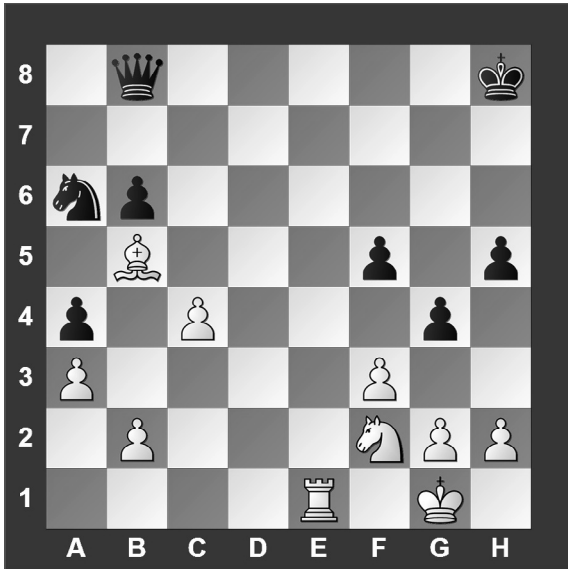
#16. White to move



What is White's best move?

- a)  $\text{Nd7}$
- b)  $\text{Qxd6}$
- c)  $\text{Qf3}$
- d) e4

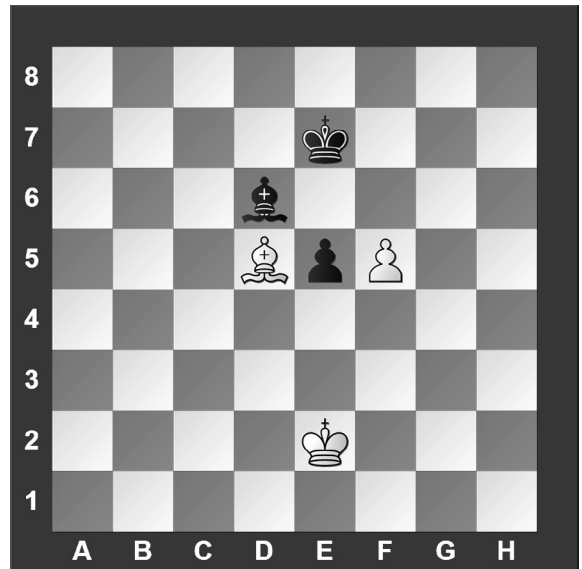
#17. White to move



What is White's best move?

- a) ♖e8
- b) ♕×a6
- c) f×g4
- d) ♕×a4

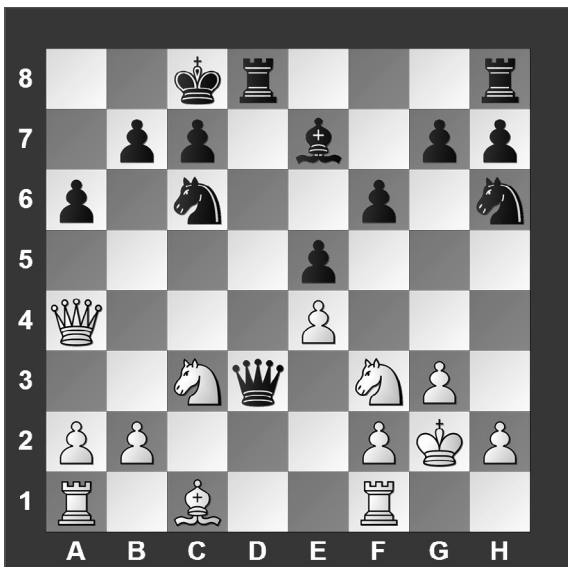
#18. White to move



With the best moves, what is the outcome of the game?

- a) White wins.
- b) Black wins.
- c) It is a draw.
- d) It is not possible to tell.

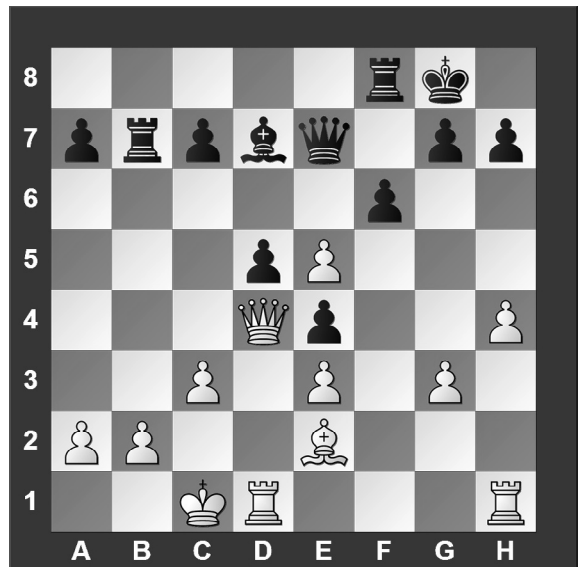
#19. White to move



What is White's best move?

- a) ♖d1
- b) ♕×h6
- c) ♘d5
- d) ♘e1

#20. White to move



What is White's best move?

- a) e×f6
- b) ♕a6
- c) c4
- d) ♚×d5



**University Interscholastic League  
A+ Chess Puzzle Contest  
2018-2019 Fall/Winter District — Grades 4 & 5**

**ANSWER KEY**

**Test**

- |       |       |
|-------|-------|
| 1. B  | 11. A |
| 2. C  | 12. D |
| 3. A  | 13. A |
| 4. A  | 14. C |
| 5. C  | 15. A |
| 6. C  | 16. A |
| 7. B  | 17. A |
| 8. A  | 18. C |
| 9. B  | 19. A |
| 10. A | 20. D |

**Tiebreaker**

- |      |      |
|------|------|
| 1. D | 5. A |
| 2. C | 6. A |
| 3. B | 7. D |
| 4. A | 8. A |